

4

3

2

1

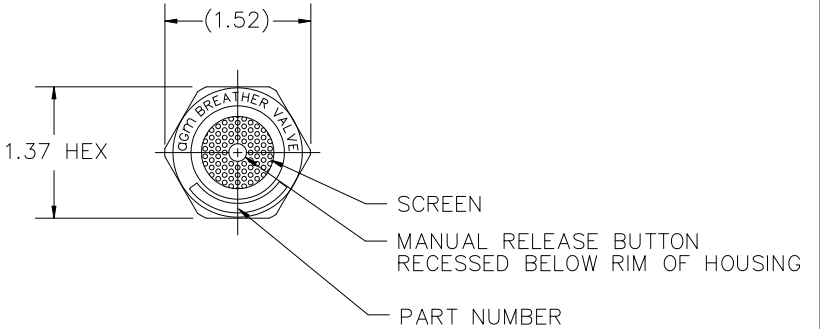
REVISIONS				
ZONE	LTR.	DESCRIPTION	DATE	APPROVED

NOTES UNLESS OTHERWISE SPECIFIED:

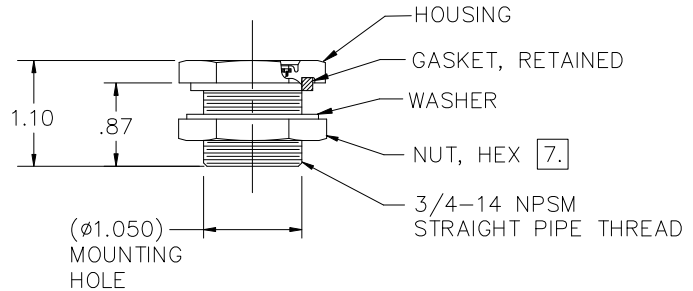
- NOMENCLATURE: VALVE, BREATHER, TWO-WAY RELIEF WITH MANUAL RELEASE BUTTON.
- APPLICABLE SPECIFICATION: SAE AS27166, TYPE III, WITH MODIFIED PERFORMANCE AS SHOWN IN TABLES ON SHEET 2.
- PERFORMANCE: SEE TABLES ON SHEET 2.
- MATERIALS:
 - HOUSING, SCREEN, RELEASE BUTTON, NUT, AND WASHER: ALUMINUM ALLOYS.
 - GASKET: SILICONE RUBBER IAW A-A-59588.
- FINISH:
 - HOUSING: ANODIZED IAW MIL-A-8625, TYPE II, CLASS 2, BLACK.
 - NUT, AND WASHER, ANODIZED IAW MIL-A-8625, TYPE II, CLASS 1.
 - RELEASE BUTTON: ANODIZED IAW MIL-A-8625, TYPE II, CLASS 2, RED.
- THE FOLLOWING ITEMS FURNISHED AS PART OF THE ASSEMBLY MAY BE PURCHASED SEPARATELY:

P/N	ITEM
300200	GASKET
300013-16	WASHER
300003-16	NUT

- RECOMMENDED HEX NUT INSTALLATION TORQUE: 30-40 IN-LBS.



↑ (OUT OF CONTAINER)
 ↓ (INTO CONTAINER)
 AIR FLOW "P"
 AIR FLOW "V"



				INTERPRET DIMENSIONS AND TOLERANCES IAW ASME Y14.5M-1994		CONTRACT		AGM CONTAINER CONTROLS, INC. P.O. BOX 40020 - TUCSON, ARIZONA 85717-0020	
				UNLESS OTHERWISE SPECIFIED DIMENSIONS ARE IN INCHES TOLERANCES:		DRAWN		DATE	
				DECIMALS .XX ±.015 ±.03		R.CASAD		7-17-23	
				ANGLES .XXX ±.010		CHECK			
				DO NOT SCALE DRAWING		APPROVED			
				FINISH		By Eric Zuercher at 10:40 am, Jul 19, 2023			
				5.		MANUFACTURING			
				PART DASH NO.		CUSTOMER			
NEXT		FINAL		NEXT ASSY.		USED ON		SIMILAR TO	
QTY. REQ'D PER ASSY.				APPLICATION					
						ACT. WT.		CALC. WT.	

AGM CONTAINER CONTROLS, INC. P.O. BOX 40020 - TUCSON, ARIZONA 85717-0020			
TITLE VALVE, BREATHER			
SIZE	FSCM NO.	DWG. NO.	REV
C	08992	TA240-R	-
SCALE 1/1	RELEASE DATE	SHEET 1 OF 2	

4

3

2

1

4

3

2

1

REVISIONS

ZONE	LTR.	DESCRIPTION	DATE	APPROVED

PRESSURE AND VACUUM SETTINGS ARE INDEPENDENT AND CAN BE SPECIFIED IN ANY COMBINATION SO LONG AS PRESSURE AND VACUUM DESIGNATORS ARE NO MORE THAN 2 PSI APART. FOR EXAMPLE, TA240-25-10-R AND TA240-05C-25C-R ARE VALID PART NUMBERS, BUT TA240-05-30-R IS NOT.

OTHER SETTINGS ARE AVAILABLE UPON REQUEST.

RESEAL VALVE PERFORMANCE

PART NUMBER	PRESSURE SIDE (FLOW OUT)			VACUUM SIDE (FLOW IN)		
	CRACKING PRESSURE RANGE (PSID)	RESEAL PRESSURE AFTER CRACK, MIN (PSID)	MINIMUM FLOW RATE (SCFM BY PSID)	CRACKING PRESSURE RANGE (PSID)	RESEAL PRESSURE AFTER CRACK, MIN (PSID)	MINIMUM FLOW RATE (SCFM BY PSID)
TA240-025-025-R	0.25-0.75	0.25	3 BY 1.75	0.25-0.75	0.25	4 BY 1.75
TA240-05-05-R	0.50-1.00	0.50	3 BY 2.00	0.50-1.00	0.50	4 BY 2.00
TA240-10-10-R	1.00-1.70	1.00	2.5 BY 2.50	1.00-1.70	1.00	3 BY 2.50
TA240-15-15-R	1.50-2.30	1.50	2.5 BY 3.00	1.50-2.30	1.50	3 BY 3.00
TA240-20-20-R	2.00-3.00	2.00	2.5 BY 3.50	2.00-3.00	2.00	2.5 BY 3.50
TA240-25-25-R	2.50-3.50	2.50	1.5 BY 4.00	2.50-3.50	2.50	1.5 BY 4.00
TA240-30-30-R	3.00-4.00	3.00	1.5 BY 4.50	3.00-4.00	3.00	2.5 BY 4.50
TA240-40-40-R	4.00-5.50	4.00	1 BY 5.50	4.00-5.50	4.00	1 BY 5.50
TA240-50-50-R	5.00-6.50	5.00	1 BY 8.00	5.00-6.50	5.00	1 BY 8.00

CRACKING VALVE PERFORMANCE

PART NUMBER	PRESSURE SIDE (FLOW OUT)			VACUUM SIDE (FLOW IN)		
	CRACKING PRESSURE RANGE (PSID)	RESEAL PRESSURE AFTER CRACK, MIN (PSID)	MINIMUM FLOW RATE (SCFM BY PSID)	CRACKING PRESSURE RANGE (PSID)	RESEAL PRESSURE AFTER CRACK, MIN (PSID)	MINIMUM FLOW RATE (SCFM BY PSID)
TA240-025C-025C-R	0.10-0.40	0.10	4 BY 1.75	0.10-0.40	0.10	4 BY 1.75
TA240-05C-05C-R	0.30-0.70	0.20	4 BY 2.00	0.30-0.70	0.20	4 BY 2.00
TA240-10C-10C-R	0.75-1.25	0.50	3 BY 2.00	0.75-1.25	0.50	4 BY 2.00
TA240-20C-20C-R	1.75-2.25	1.00	2 BY 3.50	1.75-2.25	1.00	3 BY 3.50
TA240-25C-25C-R	2.20-2.80	1.50	2 BY 4.00	2.20-2.80	1.50	2 BY 4.00
TA240-30C-30C-R	2.70-3.30	2.00	1.5 BY 4.50	2.70-3.30	2.00	1.5 BY 4.50
TA240-40C-40C-R	3.25-4.75	3.00	1.0 BY 5.50	3.25-4.75	3.00	1.0 BY 5.50

SIZE C	FSCM NO. 08992	DWG. NO. TA240-R	REV -
SCALE NONE	SHEET 2		

4

3

2

1