

4

3

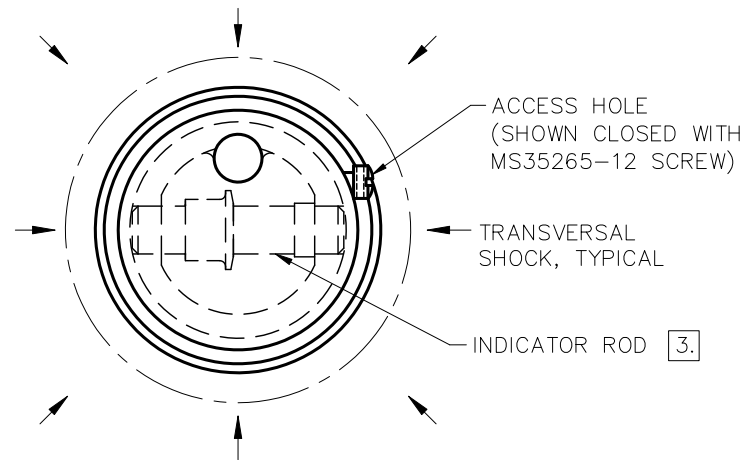
2

1

FIGURE 1:

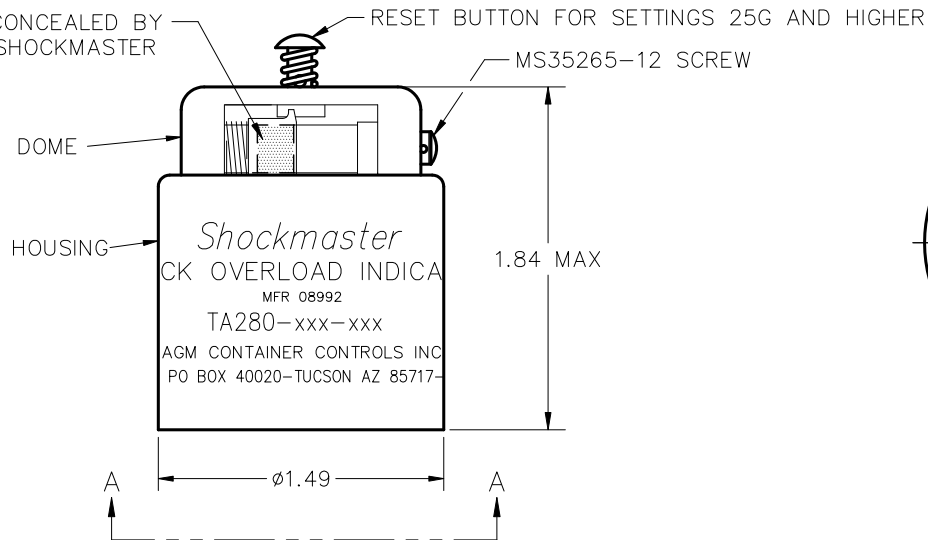
1. SHOCK OVERLOAD INDICATOR, EQUAL G, REAR MOUNTING MODEL.
2. SENSITIVITY: SENSITIVE TO BOTH TRANSVERSAL AND LONGITUDINAL (UP) SHOCK WHEN MOUNTED AS SHOWN.
3. FOR UNITS WITH SETTINGS BELOW 10G, WHEN UNIT IS MOUNTED WITH ITS LONGITUDINAL AXIS HORIZONTAL, ORIENT INDICATOR ROD WITHIN $\pm 45^\circ$ OF HORIZONTAL.

REVISIONS				
ZONE	LTR.	DESCRIPTION	DATE	APPROVED

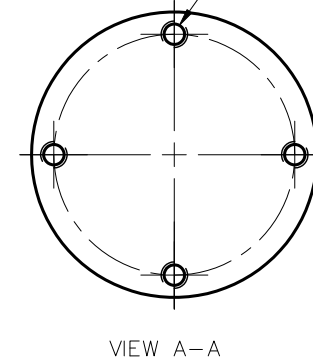


RED BAND IS CONCEALED BY
SLEEVE UNTIL SHOCKMASTER
IS TRIPPED.

LONGITUDINAL (UP) SHOCK



4X 6-32 UNC-2B THD
HOLES .290 MIN. DEEP
ON A $\phi 1.257$ BC.



SIZE C	FSCM NO. 08992	DWG. NO. TA280	REV B
SCALE NONE	SHEET 2		

4

3

2

1

4

3

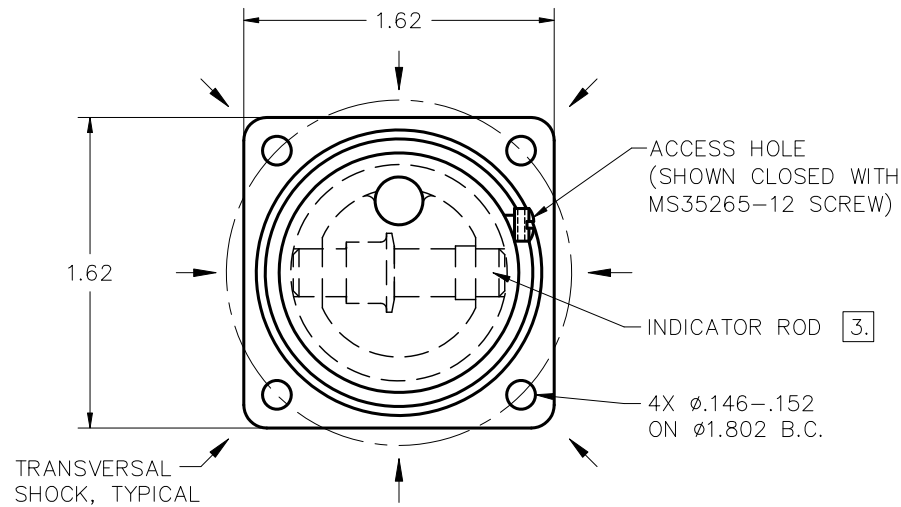
2

1

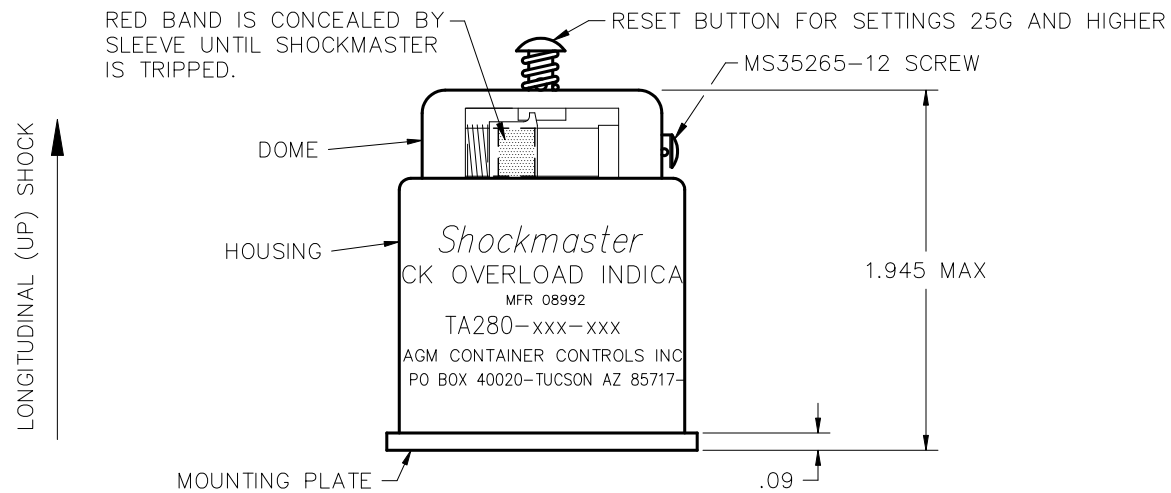
FIGURE 2:

REVISIONS				
ZONE	LTR.	DESCRIPTION	DATE	APPROVED

1. SHOCK OVERLOAD INDICATOR, EQUAL G, FRONT MOUNTING MODEL.
2. SENSITIVITY: SENSITIVE TO BOTH TRANSVERSAL AND LONGITUDINAL (UP) SHOCK WHEN MOUNTED AS SHOWN.
3. FOR UNITS WITH SETTINGS BELOW 10G, WHEN UNIT IS MOUNTED WITH ITS LONGITUDINAL AXIS HORIZONTAL, ORIENT INDICATOR ROD WITHIN $\pm 45^\circ$ OF HORIZONTAL.



RED BAND IS CONCEALED BY SLEEVE UNTIL SHOCKMASTER IS TRIPPED.



SIZE C	FSCM NO. 08992	DWG. NO. TA280	REV B
SCALE NONE	SHEET 3		FILE TA280

4

3

2

1

4

3

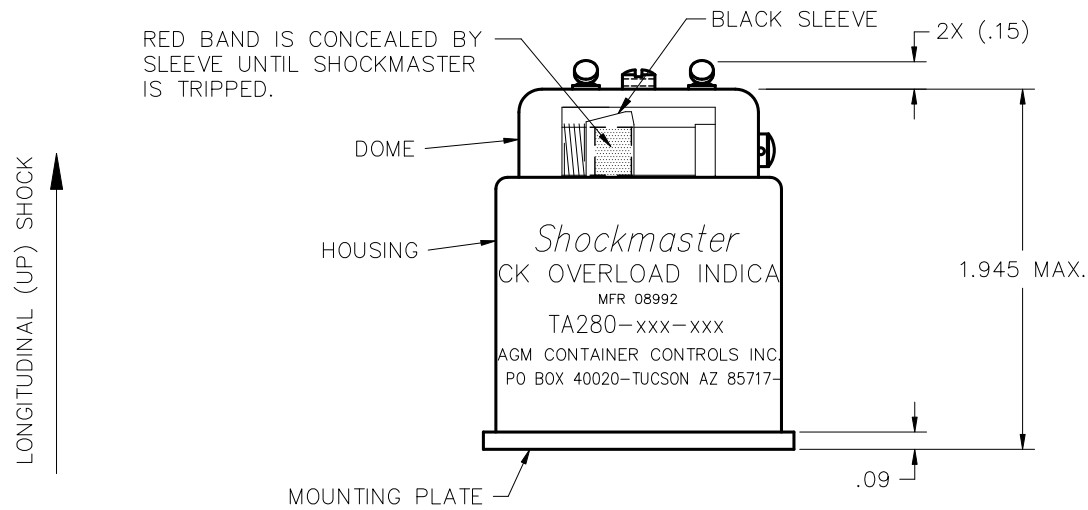
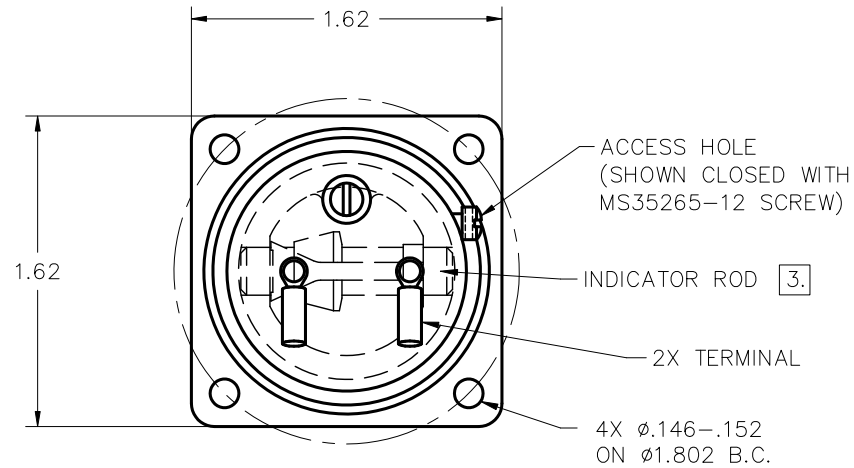
2

1

FIGURE 1:

1. SHOCK OVERLOAD INDICATOR, LONG AXIS, FRONT MOUNTING MODEL WITH ELECTRICAL CONTACTS.
2. SENSITIVITY: SENSITIVE ONLY TO LONGITUDINAL (UP) SHOCK WHEN MOUNTED AS SHOWN.
3. FOR UNITS WITH SETTINGS BELOW 10G, WHEN UNIT IS MOUNTED WITH ITS LONGITUDINAL AXIS HORIZONTAL, ORIENT INDICATOR ROD WITHIN $\pm 45^\circ$ OF HORIZONTAL.

REVISIONS				
ZONE	LTR.	DESCRIPTION	DATE	APPROVED



SIZE C	FSCM NO. 08992	DWG. NO. TA280	REV B
SCALE NONE	SHEET 4		