



4

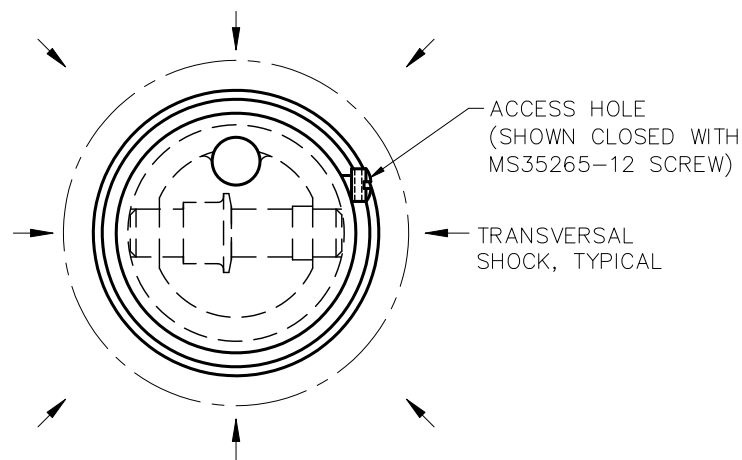
3

2

1

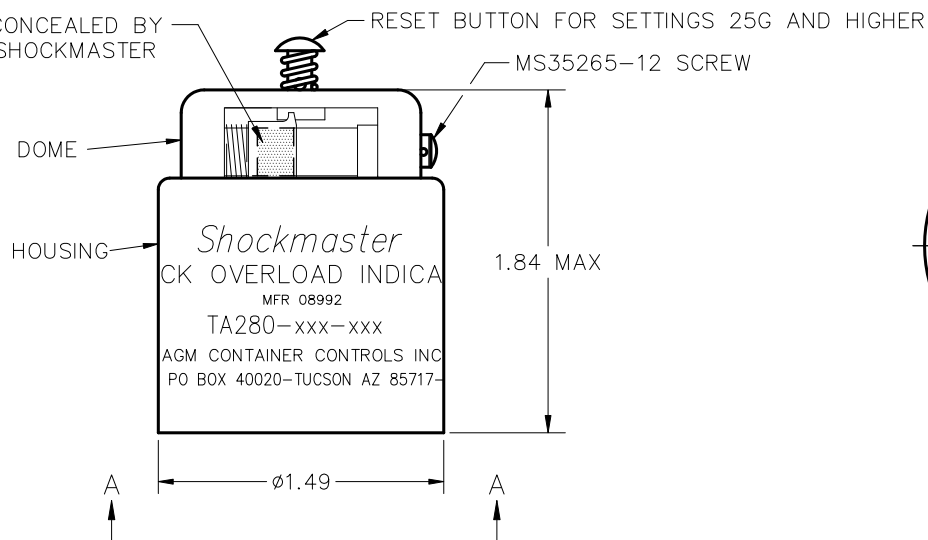
FIGURE 1:

1. SHOCK OVERLOAD INDICATOR, EQUAL G, REAR MOUNTING MODEL.
2. SENSITIVITY: SENSITIVE TO BOTH TRANSVERSAL AND LONGITUDINAL (UP) SHOCK WHEN MOUNTED AS SHOWN.

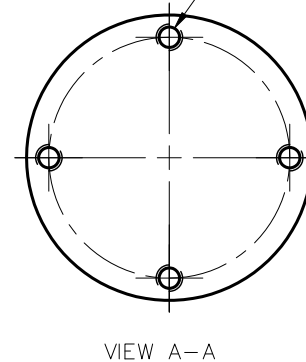


RED BAND IS CONCEALED BY  
SLEEVE UNTIL SHOCKMASTER  
IS TRIPPED.

LONGITUDINAL (UP) SHOCK



4X 6-32 UNC-2B THD  
HOLES .290 MIN. DEEP  
ON A Ø1.257 BC.



SIZE	FSCM NO.	DWG. NO.	REV
C	08992	TA280	A
SCALE	NONE	SHEET	2

4

3

2

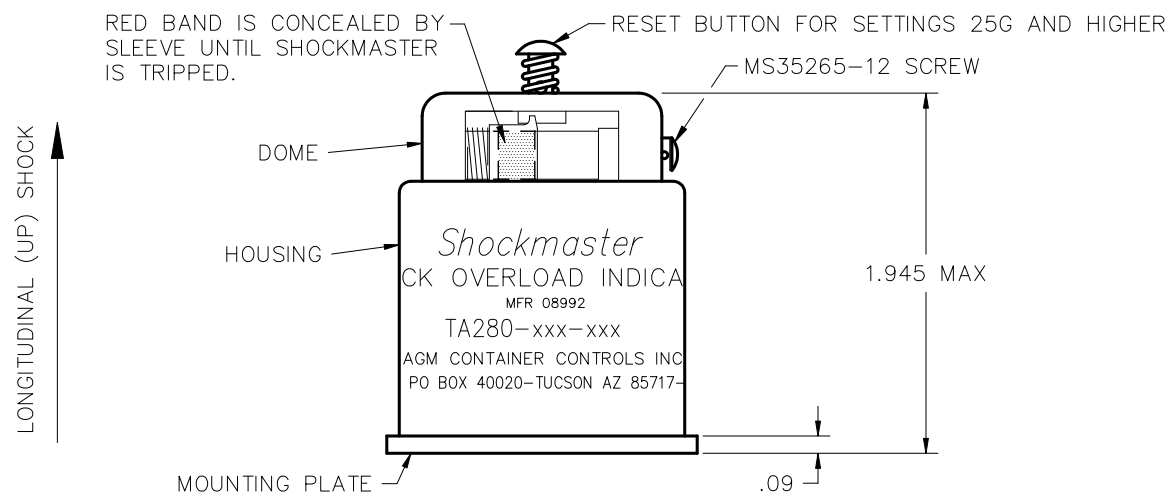
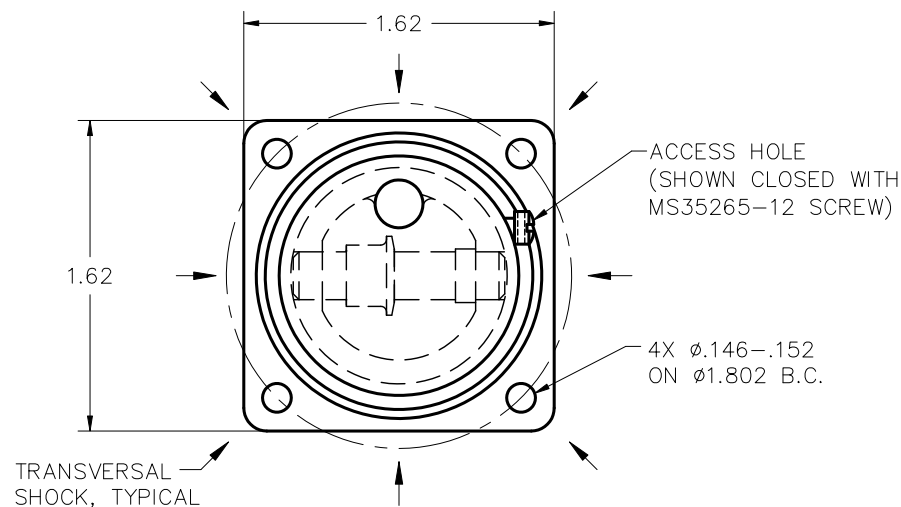
1

## REVISIONS

ZONE	LTR.	DESCRIPTION	DATE	APPROVED

FIGURE 2:

1. SHOCK OVERLOAD INDICATOR, EQUAL G, FRONT MOUNTING MODEL.
2. SENSITIVITY: SENSITIVE TO BOTH TRANSVERSAL AND LONGITUDINAL (UP) SHOCK WHEN MOUNTED AS SHOWN.



SIZE	FSCM NO.	DWG. NO.	REV
C	08992	TA280	A
SCALE	NONE	SHEET	3

4

3

2

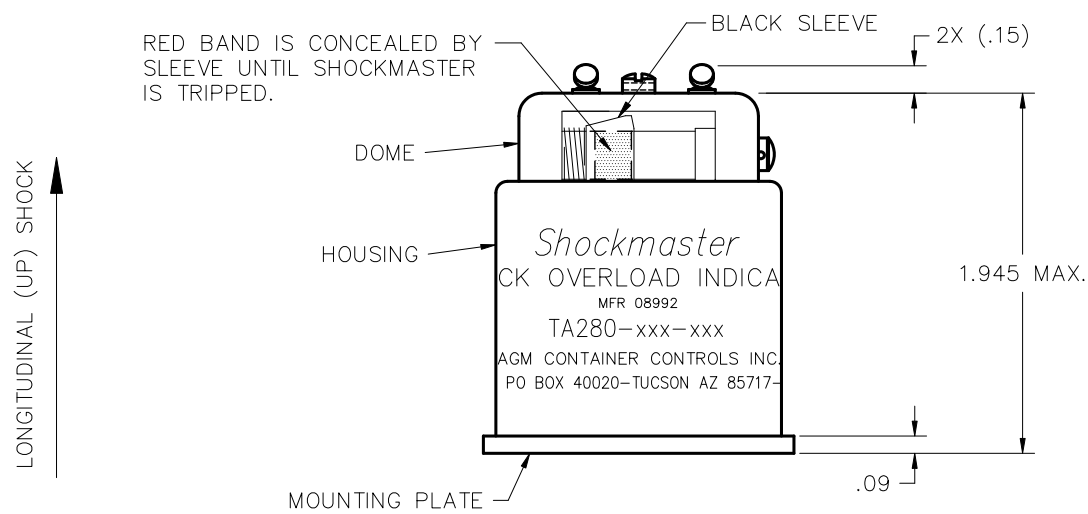
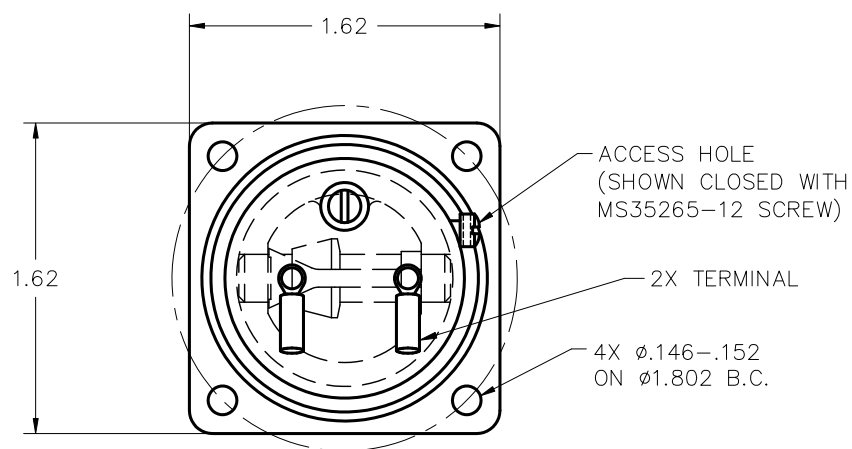
1

## REVISIONS

ZONE	LTR.	DESCRIPTION	DATE	APPROVED

FIGURE 3:

1. SHOCK OVERLOAD INDICATOR, LONG AXIS, FRONT MOUNTING MODEL WITH ELECTRICAL CONTACTS.
2. SENSITIVITY: SENSITIVE ONLY TO LONGITUDINAL (UP) SHOCK WHEN MOUNTED AS SHOWN.



SIZE	FSCM NO.	DWG. NO.	REV
C	08992	TA280	A
SCALE	NONE	SHEET	4