

4

3

2

1

REVISIONS			
ZONE	LTR.	DESCRIPTION	DATE
			APPROVED

By Eric Zuercher at 9:41 am, Apr 02, 2025

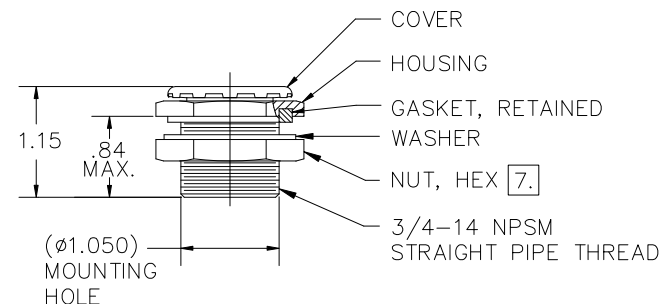
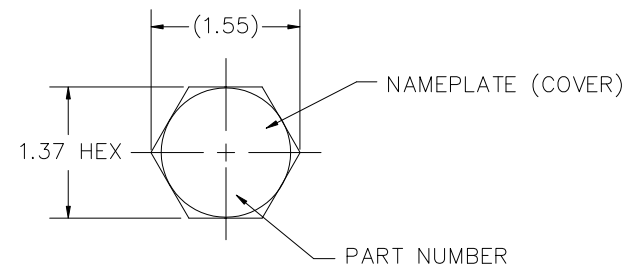
NOTES UNLESS OTHERWISE SPECIFIED:

1. NOMENCLATURE: VALVE, BREATHER.
2. APPLICABLE SPECIFICATION: SAE AS27166, WITH MODIFIED PERFORMANCE AS SHOWN IN TABLES ON SHEETS 2, 3, AND 4.
3. PERFORMANCE: SEE TABLES ON SHEETS 2, 3, AND 4.
4. MATERIALS:
 - 4.1 HOUSING, COVER, NUT, AND WASHER: ALUMINUM ALLOYS.
 - 4.2 GASKET AND INTERNAL SEALS (NOT SHOWN): SILICONE RUBBER IAW A-A-59588.
5. FINISH: HOUSING, NUT, AND WASHER, ANODIZED IAW MIL-A-8625, TYPE II, CLASS 1.
6. THE FOLLOWING ITEMS FURNISHED AS PART OF THIS ASSEMBLY MAY BE PURCHASED SEPARATELY:

P/N 300200	GASKET
300013-16	WASHER
300003-16	NUT

7. RECOMMENDED INSTALLATION TORQUE: 30-40 IN-LBS.

AIR FLOW "P" (OUT OF CONTAINER)
AIR FLOW "V" (INTO CONTAINER)



				INTERPRET DIMENSIONS AND TOLERANCES IAW ANSI Y14.5M-1982		CONTRACT		agm CONTAINER CONTROLS, INC.	
				UNLESS OTHERWISE SPECIFIED DIMENSIONS ARE IN INCHES TOLERANCES:		DRAWN M.ONTIVEROS DATE 3-4-16		P.O. BOX 40020 - TUCSON, ARIZONA 85717-0020	
				DECIMALS .XX ±.02 ANGLES ±.5°		CHECK E.ZUERCHER DATE 3-4-16		TITLE VALVE, BREATHER	
				DO NOT SCALE DRAWING		APPROVED E.ZUERCHER DATE 3-4-16		SIZE C FSCM NO. 08992 DWG. NO. TA330	
				FINISH 5.		MANUFACTURING		REV C	
				SIMILAR TO		CUSTOMER		SCALE 1 RELEASE DATE SHEET 1 OF 3	
PART DASH NO.	QTY. REQ'D PER ASSY.	FINAL	NEXT ASSY.	USED ON	ACT. WT.	CALC. WT.			
APPLICATION									

4

3

2

1

4

3

2

1

PRESSURE AND VACUUM SETTINGS ARE INDEPENDENT AND CAN BE SPECIFIED IN ANY COMBINATION SO LONG AS PRESSURE AND VACUUM DESIGNATORS ARE NO MORE THAN 2 PSI APART. FOR EXAMPLE, TA330-25-10 AND TA330-05C-25C ARE VALID PART NUMBERS, BUT TA330-05-30 IS NOT.

OTHER SETTINGS ARE AVAILABLE UPON REQUEST.

REVISIONS				
ZONE	LTR.	DESCRIPTION	DATE	APPROVED

RESEAL VALVE PERFORMANCE						
PART NUMBER	PRESSURE SIDE (FLOW OUT)			VACUUM SIDE (FLOW IN)		
	CRACKING PRESSURE RANGE (PSID)	RESEAL PRESSURE AFTER CRACK, MIN (PSID)	MINIMUM FLOW RATE (SCFM BY PSID)	CRACKING PRESSURE RANGE (PSID)	RESEAL PRESSURE AFTER CRACK, MIN (PSID)	MINIMUM FLOW RATE (SCFM BY PSID)
TA330-025-025	0.25-0.75	0.25	3 BY 1.75	0.25-0.75	0.25	4 BY 1.75
TA330-05-05	0.50-1.00	0.50	3 BY 2.00	0.50-1.00	0.50	4 BY 2.00
TA330-10-10	1.00-1.50	1.00	2.5 BY 2.50	1.00-1.50	1.00	3.5 BY 2.50
TA330-15-15	1.50-2.25	1.50	2 BY 3.00	1.50-2.25	1.50	3 BY 3.00
TA330-20-20	2.00-3.00	2.00	2 BY 3.50	2.00-3.00	2.00	3 BY 3.50
TA330-25-25	2.50-3.50	2.50	1.5 BY 4.00	2.50-3.50	2.50	2.5 BY 4.00
TA330-30-30	3.00-4.00	3.00	1.5 BY 4.50	3.00-4.00	3.00	2.5 BY 4.50
TA330-35-35	3.50-5.00	3.50	1.5 BY 5.00	3.50-5.00	3.50	2 BY 5.00
TA330-45-45	4.50-5.50	4.50	1 BY 6.00	4.50-5.50	4.50	1 BY 6.00
TA330-50-50	5.00-6.50	5.00	1 BY 8.00	5.00-6.50	5.00	1 BY 8.00
TA330-55-55	5.50-7.00	5.50	1 BY 9.00	5.50-7.00	5.50	1 BY 9.00

CRACKING VALVE PERFORMANCE						
PART NUMBER	PRESSURE SIDE (FLOW OUT)			VACUUM SIDE (FLOW IN)		
	CRACKING PRESSURE RANGE (PSID)	RESEAL PRESSURE AFTER CRACK, MIN (PSID)	MINIMUM FLOW RATE (SCFM BY PSID)	CRACKING PRESSURE RANGE (PSID)	RESEAL PRESSURE AFTER CRACK, MIN (PSID)	MINIMUM FLOW RATE (SCFM BY PSID)
TA330-005C-005C	0.10 MAX	N/R	2.0 BY 0.50	0.10 MAX	N/R	1.5 BY 0.50
TA330-02C-02C	0.10-0.30	0.10	3.5 BY 1.75	0.10-0.30	0.10	3.5 BY 1.75
TA330-025C-025C	0.10-0.40	0.10	3.5 BY 1.75	0.10-0.40	0.10	3.5 BY 1.75
TA330-04C-04C	0.35-0.55	0.10	4 BY 1.75	0.35-0.55	0.10	4 BY 1.75
TA330-05C-05C	0.30-0.70	0.10	3 BY 2.00	0.30-0.70	0.10	4 BY 2.00
TA330-10C-10C	0.75-1.25	0.50	3 BY 2.00	0.75-1.25	0.50	4 BY 2.00
TA330-15C-15C	1.25-1.75	1.00	3 BY 3.00	1.25-1.75	1.00	3 BY 3.00
TA330-20C-20C	1.75-2.25	1.00	2 BY 3.50	1.75-2.25	1.00	3 BY 3.50
TA330-25C-25C	2.20-2.80	1.70	2 BY 4.00	2.20-2.80	1.70	2 BY 4.00
TA330-30C-30C	2.70-3.30	2.00	1.5 BY 4.50	2.70-3.30	2.00	1.5 BY 4.50
TA330-35C-35C	3.00-4.00	2.00	1.5 BY 5.00	3.00-4.00	2.00	1.5 BY 5.00
TA330-40C-40C	3.25-4.75	3.00	1 BY 5.50	3.25-4.75	3.00	1 BY 5.50
TA330-55C-55C	5.00-6.00	4.50	1 BY 7.00	5.00-6.00	4.50	1 BY 7.00

SIZE	FSCM NO.	DWG. NO.	REV
C	08992	TA330	C
SCALE	NONE	SHEET	2

4

3

2

1

4

3

2

1

ONE WAY PRESSURE (-P-) AND ONE WAY VACUUM (-V-),
VALVE SETTINGS SHOWN BELOW:

REVISIONS			
ZONE	LTR.	DESCRIPTION	DATE
			APPROVED

RESEAL VALVE PERFORMANCE						
PART NUMBER	PRESSURE SIDE (FLOW OUT)			VACUUM SIDE (FLOW IN)		
	CRACKING PRESSURE RANGE (PSID)	RESEAL PRESSURE AFTER CRACK, MIN (PSID)	MINIMUM FLOW RATE (SCFM BY PSID)	CRACKING PRESSURE RANGE (PSID)	RESEAL PRESSURE AFTER CRACK, MIN (PSID)	MINIMUM FLOW RATE (SCFM BY PSID)
TA330-P-02	0.20-0.60	0.20	3 BY 1.75	N/A	N/A	NO LEAK BELOW 15
TA330-P-05	0.50-1.00	0.50	3 BY 2.00	N/A	N/A	NO LEAK BELOW 15
TA330-P-08	0.80-1.30	0.80	2.5 BY 2.23	N/A	N/A	NO LEAK BELOW 15
TA330-P-10	1.00-1.50	1.00	2.5 BY 3.00	N/A	N/A	NO LEAK BELOW 15
TA330-P-20	2.00-3.00	2.00	2 BY 3.50	N/A	N/A	NO LEAK BELOW 15
TA330-P-25	2.50-3.50	2.50	1.5 BY 4.00	N/A	N/A	NO LEAK BELOW 15
TA330-P-30	3.00-4.00	3.00	1.5 BY 4.50	N/A	N/A	NO LEAK BELOW 15
TA330-P-50	5.00-6.50	5.00	1 BY 8.00	N/A	N/A	NO LEAK BELOW 15
TA330-P-70	7.00-10.00	7.00	4.4 BY 12.00	N/A	N/A	NO LEAK BELOW 15
TA330-P-90	N/R	9.00	1 BY 12.00	N/A	N/A	NO LEAK BELOW 15
TA330-P-100	N/R	10.00	1 BY 13.00	N/A	N/A	NO LEAK BELOW 15
TA330-V-20	N/A	N/A	NO LEAK BELOW 15	2.00-3.00	2.00	3 BY 3.50
TA330-V-45	N/A	N/A	NO LEAK BELOW 15	4.50-5.50	4.50	1 BY 6.00
TA330-V-100	N/A	N/A	NO LEAK BELOW 15	10.00-11.00	9.00	1 BY 11.50

CRACKING VALVE PERFORMANCE						
PART NUMBER	CRACKING PRESSURE RANGE (PSID)	RESEAL PRESSURE AFTER CRACK, MIN (PSID)	MINIMUM FLOW RATE (SCFM BY PSID)	CRACKING PRESSURE RANGE (PSID)	RESEAL PRESSURE AFTER CRACK, MIN (PSID)	MINIMUM FLOW RATE (SCFM BY PSID)
TA330-P-025C	0.10-0.40	0.05	3.5 BY 1.75	N/A	N/A	NO LEAK BELOW 15
TA330-P-03C	0.20-0.40	0.05	3 BY 1.75	N/A	N/A	NO LEAK BELOW 15
TA330-P-04C	0.30-0.50	0.05	3 BY 2.00	N/A	N/A	NO LEAK BELOW 15
TA330-P-05C	0.30-0.70	0.10	3 BY 1.50	N/A	N/A	NO LEAK BELOW 15
TA330-P-15C	1.25-1.75	1.00	3 BY 3.00	N/A	N/A	NO LEAK BELOW 15
TA330-P-25C	2.20-2.80	1.70	2 BY 4.00	N/A	N/A	NO LEAK BELOW 15
TA330-P-30C	2.70-3.30	2.00	1.5 BY 4.50	N/A	N/A	NO LEAK BELOW 15
TA330-P-35C	3.00-4.00	2.00	1.5 BY 5.00	N/A	N/A	NO LEAK BELOW 15
TA330-P-40C	3.65-4.35	3.00	1 BY 5.50	N/A	N/A	NO LEAK BELOW 15
TA330-P-50C	4.50-5.50	4.00	1 BY 6.50	N/A	N/A	NO LEAK BELOW 15
TA330-P-70C	6.50-7.50	5.00	1 BY 9.50	N/A	N/A	NO LEAK BELOW 15
TA330-P-90C	8.00-10.00	7.00	1 BY 11.50	N/A	N/A	NO LEAK BELOW 15
TA330-V-025C	N/A	N/A	NO LEAK BELOW 15	0.10-0.40	0.10	3.5 BY 1.75
TA330-V-05C	N/A	N/A	NO LEAK BELOW 15	0.30-0.70	0.10	4 BY 2.00
TA330-V-10C	N/A	N/A	NO LEAK BELOW 15	0.75-1.25	0.50	4 BY 2.00
TA330-V-15C	N/A	N/A	NO LEAK BELOW 15	1.25-1.75	1.00	3 BY 3.00

SIZE	FSCM NO.	DWG. NO.	REV
C	08992	TA330	C
SCALE	NONE	SHEET	3