

4

3

2

1

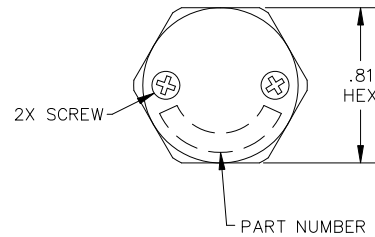
| REVISIONS |      |             |      |          |
|-----------|------|-------------|------|----------|
| ZONE      | LTR. | DESCRIPTION | DATE | APPROVED |

**APPROVED**  
By Eric Zuercher at 1:42 pm, Oct 17, 2024

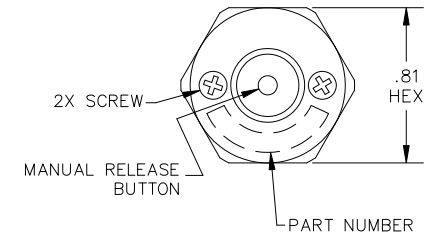
NOTES UNLESS OTHERWISE SPECIFIED:

- NOMENCLATURE: VALVE, BREATHER, TWO-WAY RELIEF WITH REPLACEABLE DESICCANT CARTRIDGE AND OPTIONAL MANUAL RELEASE BUTTON, MOUNTING FLANGE AND RFI SHIELD.
- REFERENCE SPECIFICATIONS: SAE AS27166, WITH MODIFIED PERFORMANCE AS SHOWN IN TABLE ON SHEET 4.
- FLOW PERFORMANCE: SEE TABLE ON SHEET 4.
- MATERIALS:
  - WEATHERSHIELD, VALVE HOUSING, HEX NUT, WASHER, FLANGE (OPTIONAL) AND RFI HOUSING (OPTIONAL): ALUMINUM ALLOYS.
  - DESICCANT CARTRIDGE SHELL: POROUS HDPE, 15-90 MICRON NOMINAL PORE SIZE.
  - SCREW AND MANUAL RELEASE BUTTON (OPTIONAL): CRES.
  - O-RING: MS28775.
  - CONDUCTIVE O-RING (OPTIONAL): SILVER PLATED, ALUMINUM FILLED, SILICONE ELASTOMER.
  - DESICCANT: MOLECULAR SIEVE OR SILICA GEL.
  - RFI SCREEN (OPTIONAL): 100X100 CRES WIRE CLOTH, .0045 WIRE DIAMETER.
- FINISHES:
  - VALVE HOUSING, WEATHERSHIELD, WASHER, HEX NUT, AND FLANGE: ANODIZED IAW MIL-A-8625, TYPE II, CLASS 1. VALVE HOUSING ADDITIONALLY CLEAR TEFLON COATED.
  - RFI HOUSING: CONVERSION COATED IAW MIL-DTL-5541.
- RECOMMENDED INSTALLATION TORQUE 20-30 IN-LBS.
- RECOMMENDED INSTALLATION TORQUE 30-40 IN-LBS.

TA225 VALVE  
(HAS SOLID WEATHERSHIELD)



TA225-R VALVE  
(HAS MANUAL RELEASE BUTTON)



PART NUMBER CONVENTION: TA225-P-V-R-DL-F

P = PRESSURE SETTING SEE TABLE ON SHEET 4  
 V = VACUUM SETTING SEE TABLE ON SHEET 4  
 R = MANUAL RELEASE BUTTON OPTIONAL; OMIT -R FOR SOLID WEATHER SHIELD  
 D = DESICCANT TYPE MS (MOL SIEVE) OR SG (SILICA GEL)  
 L = LENGTH, BETWEEN .5 AND 6 TO NEAREST .1, (SEE FITTING OPTION -0)  
 F = FITTING OPTION 0, 1, 2, OR 3. SEE FIGURES

EXAMPLES:

TA225-05-05-MS3.0-1 TA225-05-05-R VALVE (HAS MANUAL RELEASE BUTTON), WITH 3.0"-LONG CARTRIDGE CONTAINING MOLECULAR SIEVE, WITH MOUNTING FLANGE  
 TA225-10-10-SG1.5-3 TA225-10-10 VALVE (HAS SOLID WEATHER SHIELD), WITH 1.5"-LONG CARTRIDGE CONTAINING SILICA GEL, WITH MOUNTING FLANGE AND RFI SHIELD

|  |  |  |  |  |  |               |  |  |  |                      |  |
|--|--|--|--|--|--|---------------|--|--|--|----------------------|--|
|  |  |  |  | INTERPRET DIMENSIONS AND TOLERANCES IAW ASME Y14.5M-1994 |  | CONTRACT      |  | <b>AGM CONTAINER CONTROLS, INC.</b><br>P.O. BOX 40020 - TUCSON, ARIZONA 85717-0020 |  |                      |  |
|  |  |  |  | UNLESS OTHERWISE SPECIFIED DIMENSIONS ARE IN INCHES      |  | DRAWN         |  | DATE   |  | TITLE                |  |
|  |  |  |  | TOLERANCES:  |  | R.CASAD       |  | 4-13-21  |  | BREATHING DESICCATOR |  |
|  |  |  |  | DECIMALS .XX ±.015                                       |  | CHECK         |  | 4-26-21  |  |                      |  |
|  |  |  |  | ANGLES ±.5°  |  | E.ZUERCHER    |  | 4-26-21  |  |                      |  |
|  |  |  |  | DO NOT SCALE DRAWING                                     |  | APPROVED      |  | 4-26-21  |  |                      |  |
|  |  |  |  | FINISH   |  | E.ZUERCHER    |  |  |  |                      |  |
|  |  |  |  | 5.   |  | MANUFACTURING |  |  |  |                      |  |
|  |  |  |  | PART DASH NO.  |  | CUSTOMER      |  |  |  |                      |  |
|  |  |  |  | NEXT FINAL   |  | SIZE          |  | FSCM NO.   |  | DWG. NO.             |  |
|  |  |  |  | NEXT ASSY.   |  | C             |  | 08992  |  | TA225-PVDLF          |  |
|  |  |  |  | USED ON  |  | SCALE 4/1     |  | RELEASE DATE   |  | SHEET 1 OF 4         |  |
|  |  |  |  | SIMILAR TO   |  |               |  |  |  |                      |  |
|  |  |  |  | 4.   |  |               |  |  |  |                      |  |
|  |  |  |  | ACT. WT.   |  |               |  |  |  |                      |  |
|  |  |  |  | CALC. WT.  |  |               |  |  |  |                      |  |
|  |  |  |  | APPLICATION  |  |               |  |  |  |                      |  |

4

3

2

1

4

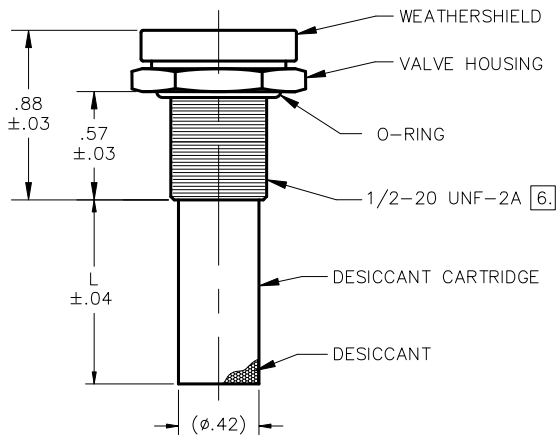
3

2

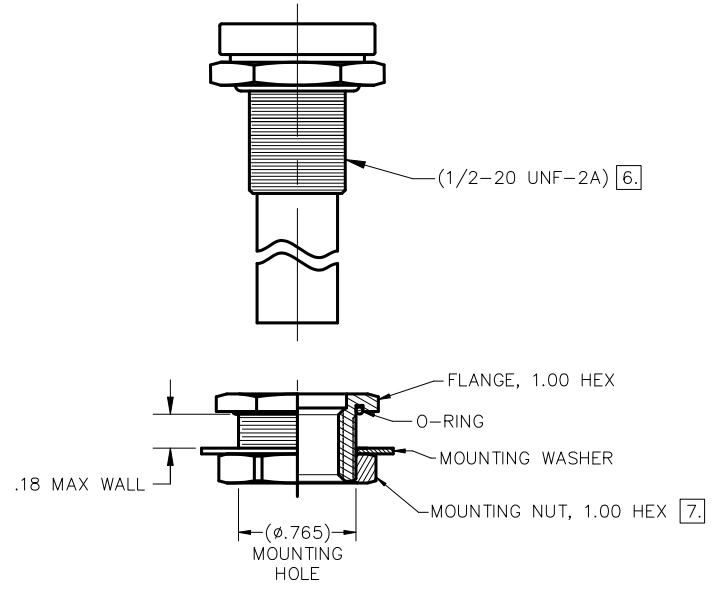
1

| REVISIONS |      |             |      |          |
|-----------|------|-------------|------|----------|
| ZONE      | LTR. | DESCRIPTION | DATE | APPROVED |
|           |      |             |      |          |

(PRESSURE RELIEF)  
 AIR FLOW 'P'  
 (VACUUM RELIEF)  
 AIR FLOW 'V'



FITTING OPTION: -0  
 NO MOUNTING HARDWARE  
 (FOR INSTALLATION INTO A THREADED HOLE)



FITTING OPTION: -1  
 MOUNTING FLANGE

FOR VALVE AND CARTRIDGE DIMENSIONS,  
 SEE FITTING OPTION -0 FIGURE.

|       |          |             |     |
|-------|----------|-------------|-----|
| SIZE  | FSCM NO. | DWG. NO.    | REV |
| C     | 08992    | TA225-PVDLF | A   |
| SCALE | NONE     | SHEET       | 2   |

4

3

2

1

4

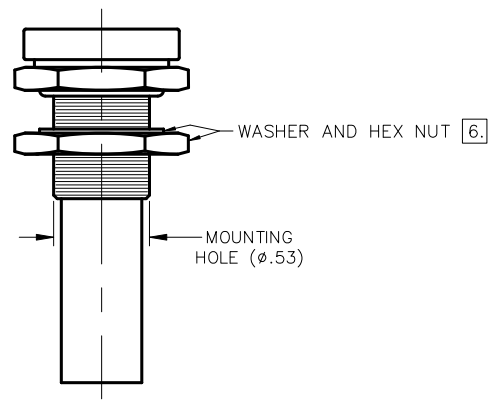
3

2

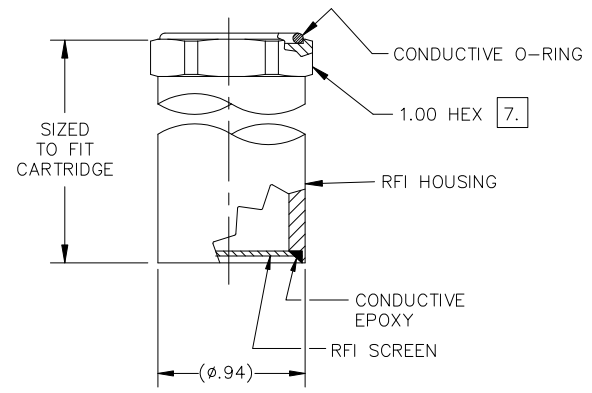
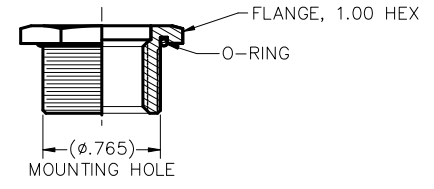
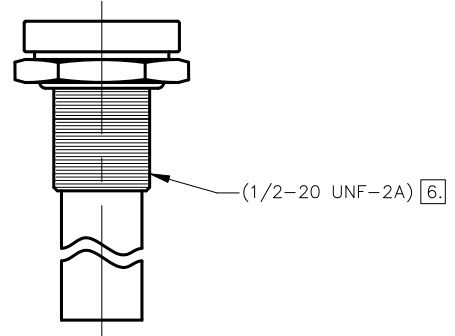
1

| REVISIONS |      |             |      |          |
|-----------|------|-------------|------|----------|
| ZONE      | LTR. | DESCRIPTION | DATE | APPROVED |
|           |      |             |      |          |

AIR FLOW 'P' (PRESSURE RELIEF)  
 AIR FLOW 'V' (VACUUM RELIEF)



FITTING OPTION: -2  
 HEX NUT AND WASHER.  
 FOR VALVE AND CARTRIDGE DIMENSIONS,  
 SEE FITTING OPTION -0 FIGURE.



FITTING OPTION: -3  
 MOUNTING FLANGE AND RFI SHIELD.  
 FOR VALVE AND CARTRIDGE DIMENSIONS,  
 SEE FITTING OPTION -0 FIGURE.

|       |          |             |     |
|-------|----------|-------------|-----|
| SIZE  | FSCM NO. | DWG. NO.    | REV |
| C     | 08992    | TA225-PVDLF | A   |
| SCALE | NONE     | SHEET       | 3   |

4

3

2

1

## REVISIONS

| ZONE | LTR. | DESCRIPTION | DATE | APPROVED |
|------|------|-------------|------|----------|
|      |      |             |      |          |

OMIT -R IN PART NUMBER FOR SOLID WEATHER SHIELD.

DASH NUMBERS FOR PRESSURE AND VACUUM SIDE MAY BE USED IN ANY COMBINATION, SO LONG AS PRESSURE AND VACUUM DESIGNATORS ARE NO MORE THAN 2 PSI APART. FOR EXAMPLE, TA225-05-25 IS VALID BUT TA225-05-30 IS NOT. CONTACT AGM FOR AVAILABILITY OF SETTINGS IN ADDITION TO THOSE SHOWN BELOW.

## CRACKING VALVE PERFORMANCE

| PART NUMBER            | PRESSURE SIDE (FLOW OUT)       |   |                                  | VACUUM SIDE (FLOW IN)          |   |                                  |
|------------------------|--------------------------------|---|----------------------------------|--------------------------------|---|----------------------------------|
|                        | CRACKING PRESSURE RANGE (PSID) | RESEAL PRESSURE AFTER CRACK, MIN (PSID) | MINIMUM FLOW RATE (SLPM BY PSID) | CRACKING PRESSURE RANGE (PSID) | RESEAL PRESSURE AFTER CRACK, MIN (PSID) | MINIMUM FLOW RATE (SLPM BY PSID) |
| TA225-025C-025C-R-DL-F | 0.10-0.40                      | 0.10                                    | 3.0 BY 1.75                      | 0.10-0.40                      | 0.10                                    | 5 BY 1.75                        |
| TA225-10C-10C-R-DL-F   | 0.75-1.25                      | 0.50                                    | 3.0 BY 2.50                      | 0.75-1.25                      | 0.50                                    | 7 BY 2.50                        |

## RESEAL VALVE PERFORMANCE

| PART NUMBER        | PRESSURE SIDE (FLOW OUT)       |   |                                  | VACUUM SIDE (FLOW IN)          |   |                                  |
|--------------------|--------------------------------|---|----------------------------------|--------------------------------|---|----------------------------------|
|                    | CRACKING PRESSURE RANGE (PSID) | RESEAL PRESSURE AFTER CRACK, MIN (PSID) | MINIMUM FLOW RATE (SLPM BY PSID) | CRACKING PRESSURE RANGE (PSID) | RESEAL PRESSURE AFTER CRACK, MIN (PSID) | MINIMUM FLOW RATE (SLPM BY PSID) |
| TA225-05-05-R-DL-F | 0.50-1.00                      | 0.50                                    | 2.5 BY 2.00                      | 0.50-1.00                      | 0.50                                    | 4.0 BY 2.00                      |
| TA225-10-10-R-DL-F | 1.00-1.50                      | 1.00                                    | 3.0 BY 2.50                      | 1.00-1.50                      | 1.00                                    | 7.0 BY 2.50                      |
| TA225-15-15-R-DL-F | 1.50-2.00                      | 1.50                                    | 4.5 BY 3.00                      | 1.50-2.00                      | 1.50                                    | 6.0 BY 3.00                      |
| TA225-20-20-R-DL-F | 2.00-3.00                      | 2.00                                    | 2.0 BY 3.50                      | 2.00-3.00                      | 2.00                                    | 4.0 BY 3.50                      |
| TA225-25-25-R-DL-F | 2.50-3.50                      | 2.50                                    | 2.5 BY 4.00                      | 2.50-3.50                      | 2.50                                    | 7.5 BY 4.00                      |
| TA225-30-30-R-DL-F | 3.00-4.00                      | 3.00                                    | 1.5 BY 4.50                      | 3.00-4.00                      | 3.00                                    | 7.5 BY 4.50                      |
| TA225-35-35-R-DL-F | 3.50-4.50                      | 3.50                                    | 1.5 BY 5.00                      | 3.50-4.50                      | 3.50                                    | 7.5 BY 5.00                      |
| TA225-40-40-R-DL-F | 4.00-5.00                      | 4.00                                    | 1.5 BY 5.50                      | 4.00-5.00                      | 4.00                                    | 7.5 BY 5.50                      |
| TA225-45-45-R-DL-F | 4.50-5.50                      | 4.50                                    | 1.5 BY 6.00                      | 4.50-5.50                      | 4.50                                    | 7.5 BY 6.00                      |
| TA225-50-50-R-DL-F | 5.00-6.00                      | 5.00                                    | 2.0 BY 6.50                      | 5.00-6.00                      | 5.00                                    | 7.5 BY 6.50                      |

|               |                   |                         |          |
|---------------|-------------------|-------------------------|----------|
| SIZE<br>C     | FSCM NO.<br>08992 | DWG. NO.<br>TA225-PVDLF | REV<br>A |
| SCALE<br>NONE | SHEET<br>4        |                         |          |

4

3

2

1