

REVISIONS				
ZONE	LTR.	DESCRIPTION	DATE	APPROVED

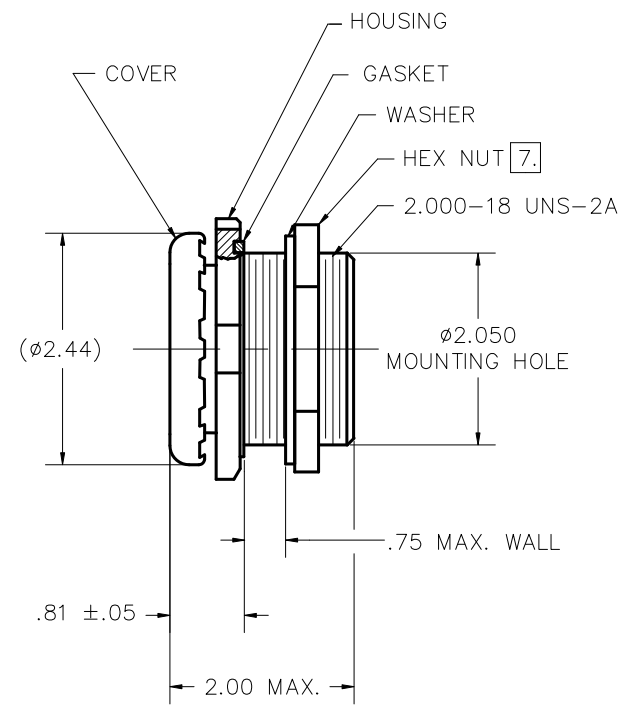
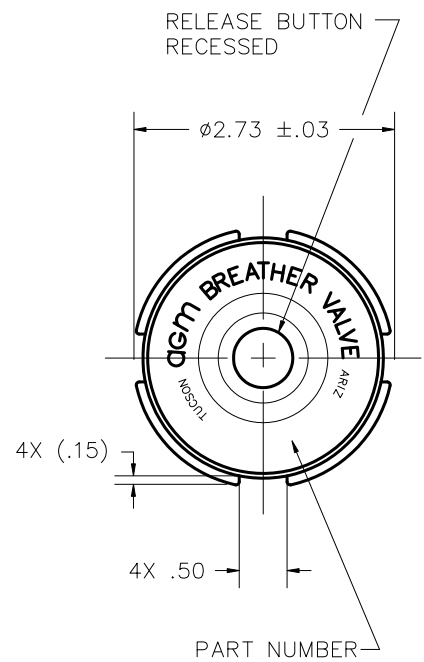
**APPROVED**  
By Eric Zuercher at 1:34 pm, Feb 24, 2023

NOTES UNLESS OTHERWISE SPECIFIED:

- NOMENCLATURE: VALVE, BREATHER, TWO-WAY RELIEF WITH MANUAL RELEASE BUTTON.
- APPLICABLE SPECIFICATION: SAE AS27166, TYPE III, WITH MODIFIED PERFORMANCE AS SHOWN IN TABLES ON SHEET 2.
- PERFORMANCE: SEE TABLES ON SHEETS 2.
- MATERIALS:
  - HOUSING AND HEX NUT: ALUMINUM DIE CASTING IAW ASTM-B85 ALLOY SCII4A.
  - WASHER AND COVER: ALUMINUM ALLOY.
  - GASKET AND INTERNAL SEALS (NOT SHOWN): SILICONE RUBBER IAW A-A-59588.
- HOUSING, WASHER, AND HEX NUT FINISH: ANODIZE IAW MIL-A-8625, TYPE II, CLASS 1. (DARK COLOR DUE TO ALLOY).
- THE FOLLOWING ITEMS FURNISHED AS PART OF THIS ASSEMBLY MAY BE PURCHASED SEPARATELY:

P/N 500016-6	WASHER
500080	GASKET
770014-16	HEX NUT

[7]. RECOMMENDED INSTALLATION TORQUE: 80-90 IN-LBS.



AIR FLOW "P" (OUT OF CONTAINER)

AIR FLOW "V" (INTO CONTAINER)

INTERPRET DIMENSIONS AND TOLERANCES IAW ASME Y14.5M-1994				CONTRACT	
UNLESS OTHERWISE SPECIFIED DIMENSIONS ARE IN INCHES				DRAWN	
TOLERANCES:				DATE	
DECIMALS		ANGLES		E.ZUERCHER	
.XX $\pm .015$		$\pm .5^\circ$		7-28-15	
.XXX $\pm .010$				CHECK	
DO NOT SCALE DRAWING				E.ZUERCHER	
FINISH				APPROVED	
5.				E.ZUERCHER	
				7-28-15	
				MANUFACTURING	
				CUSTOMER	
PART DASH NO.	NEXT FINAL	NEXT ASSY.	USED ON	SIMILAR TO	ACT. WT. CALC. WT.
	QTY. REQ'D PER ASSY.		APPLICATION		

<b>AGM CONTAINER CONTROLS, INC.</b> P.O. BOX 40020 - TUCSON, ARIZONA 85717-0020			
TITLE <b>VALVE, BREATHER</b>			
SIZE	FSCM NO.	DWG. NO.	REV
C	08992	TA770-R	D
SCALE 1/1	RELEASE DATE	SHEET	1 OF 2

4

3

2

1

DASH NUMBERS FOR PRESSURE AND VACUUM SETTINGS ARE INDEPENDANT AND MAY BE SPECIFIED IN ANY COMBINATION (E.G. TA770-05-15-R).

CONTACT AGM FOR OTHER SETTINGS IN ADDITION TO THOSE SHOWN BELOW.

REVISIONS				
ZONE	LTR.	DESCRIPTION	DATE	APPROVED

RESEAL VALVE PERFORMANCE						
PART NUMBER	PRESSURE SIDE (FLOW OUT)			VACUUM SIDE (FLOW IN)		
	CRACKING PRESSURE RANGE (PSID)	RESEAL PRESSURE AFTER CRACK, MIN (PSID)	MINIMUM FLOW RATE (SCFM BY PSID)	CRACKING PRESSURE RANGE (PSID)	RESEAL PRESSURE AFTER CRACK, MIN (PSID)	MINIMUM FLOW RATE (SCFM BY PSID)
TA770-025-025-R	0.25-0.75	0.25	21 BY 1.75	0.25-0.75	0.25	26 BY 1.75
TA770-05-05-R	0.50-1.00	0.50	20 BY 2.00	0.50-1.00	0.50	25 BY 2.00
TA770-10-10-R	1.00-1.50	1.00	18 BY 2.50	1.00-1.50	1.00	23 BY 2.50
TA770-15-15-R	1.50-2.25	1.50	16 BY 3.00	1.50-2.25	1.50	21 BY 3.00
TA770-20-20-R	2.00-3.00	2.00	14 BY 3.50	2.00-3.00	2.00	19 BY 3.50
TA770-25-25-R	2.50-3.50	2.50	12 BY 4.00	2.50-3.50	2.50	17 BY 4.00
TA770-30-30-R	3.00-4.00	3.00	10 BY 4.50	3.00-4.00	3.00	15 BY 4.50
TA770-35-35-R	3.50-4.50	3.50	8 BY 5.00	3.50-4.50	3.50	10 BY 5.00
TA770-40-40-R	4.00-5.50	4.00	8 BY 6.50	4.00-5.50	4.00	10 BY 6.50
TA770-45-45-R	4.50-6.00	4.50	10 BY 7.50	4.50-6.00	4.50	10 BY 7.50
TA770-50-50-R	5.00-6.50	5.00	10 BY 8.50	5.00-6.50	5.00	10 BY 8.50
TA770-55-55-R	5.50-7.00	5.50	10 BY 9.00	5.50-7.00	5.50	10 BY 9.00

CRACKING VALVE PERFORMANCE						
PART NUMBER	PRESSURE SIDE (FLOW OUT)			VACUUM SIDE (FLOW IN)		
	CRACKING PRESSURE RANGE (PSID)	RESEAL PRESSURE AFTER CRACK, MIN (PSID)	MINIMUM FLOW RATE (SCFM BY PSID)	CRACKING PRESSURE RANGE (PSID)	RESEAL PRESSURE AFTER CRACK, MIN (PSID)	MINIMUM FLOW RATE (SCFM BY PSID)
TA770-005C-005C-R	0.00-0.10	N/R	5 BY 0.30	0.00-0.10	N/R	5 BY 0.30
TA770-01C-01C-R	0.05-0.12	N/R	4 BY 0.40	0.05-0.12	N/R	4 BY 0.40
TA770-025C-025C-R	0.15-0.35	0.05	12 BY 0.75	0.15-0.35	0.05	14 BY 0.75
TA770-05C-05C-R	0.25-0.75	0.10	20 BY 1.75	0.25-0.75	0.10	25 BY 1.75
TA770-10C-10C-R	0.75-1.25	0.50	20 BY 2.00	0.75-1.25	0.50	20 BY 2.00
TA770-15C-15C-R	1.30-1.70	1.00	20 BY 3.00	1.30-1.70	1.00	20 BY 3.00
TA770-20C-20C-R	1.75-2.25	1.50	16 BY 3.00	1.75-2.25	1.50	21 BY 3.00
TA770-25C-25C-R	2.25-2.75	1.75	14 BY 3.50	2.25-2.75	1.75	19 BY 3.50
TA770-30C-30C-R	2.70-3.30	2.50	10 BY 4.50	2.70-3.30	2.50	15 BY 4.50
TA770-50C-50C-R	4.50-5.20	3.50	10.5 BY 7.00	4.50-5.20	3.50	10.5 BY 7.00

SIZE C	FSCM NO. 08992	DWG. NO. TA770-R	REV D
SCALE NONE	SHEET 2		

4

3

2

1