

4

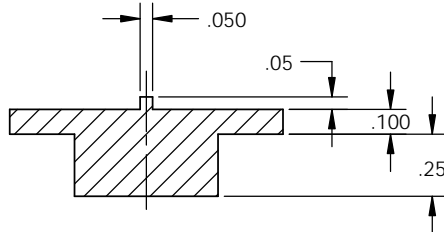
3

2

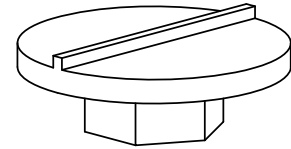
1

THIS DOCUMENT CONTAINS PROPRIETARY INFORMATION AND EXCEPT WITH WRITTEN PERMISSION BY AGM CONTAINER CONTROLS, INC. SUCH INFORMATION SHALL NOT BE PUBLISHED, DISCLOSED TO OTHERS OR USED FOR ANY PURPOSE AND THE DOCUMENT SHALL NOT BE DUPLICATED IN WHOLE OR IN PART.

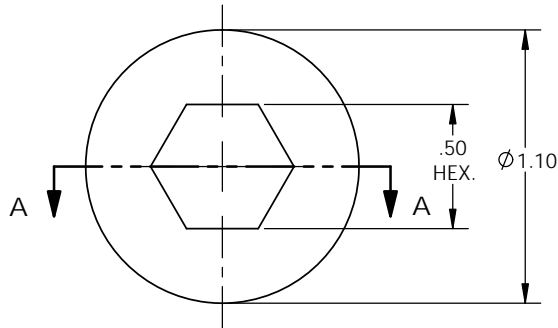
REVISIONS				
ZONE	LTR.	DESCRIPTION	DATE	APPROVAL



SECTION A-A



ISOMETRIC VIEW FOR REFERENCE ONLY



NOTES UNLESS OTHERWISE SPECIFIED:

- DESCRIPTION: 1/16 SPANNER DRIVE TOOL FOR TA348 HUMIDITY INDICATORS.
- MATERIAL: STAINLESS STEEL.
- FINISH: PASSIVATE IAW SAE AMS2700.

SPECIFICATION CONTROL DRAWING

INTERPRET DIMENSIONS AND TOLERANCES IAW ANS Y14.5M-1994 UNLESS OTHERWISE SPECIFIED DIMENSIONS ARE IN INCHES TOLERANCES: DECIMALS .XX ± .015 .XXX ± .010 ANGLES ± 5°				CONTRACT NO. DRAWN M.ONTIVEROS DATE 1-21-11 CHECK P.LANE 1-22-11 APPROVED P.LANE 1-22-11 MANUFACTURING CUSTOMER		aGm CONTAINER CONTROLS, INC. P.O. BOX 40020 - TUCSON, ARIZONA 85717-0020					
DO NOT SCALE DRAWING				FINISH 2		TITLE 1/16 SPANNER DRIVE					
PART DASH NO.	NEXT	FINAL	NEXT ASSY.	USED ON	SIMILAR TO	ACT. WT.	CALC. WT.	SIZE B	FSCM NO. 08992	DWG. NO. 348110	REV. -
QTY. REQ'D PER ASSY.			APPLICATION			SCALE 2/1		RELEASE DATE		SHEET 1 OF 1	

4

3

2

1