



## H2OLock<sup>®</sup>

### Required Equipment

#### Vacuum Oven

Capable of temperature  $\geq 450^{\circ}\text{F}$  ( $232^{\circ}\text{C}$ ) and vacuum  $> 25\text{inHg}$  ( $> 635\text{Torr}$ ,  $> 847\text{mbar}$ ,  $> 84.7\text{kpa}$ )

#### Roughing Pump

*(Note: a roughing pump is specialized for higher volume airflow to help reach the desired pressure differential in the oven and will be turned off once the desired pressure differential has been reached.)*

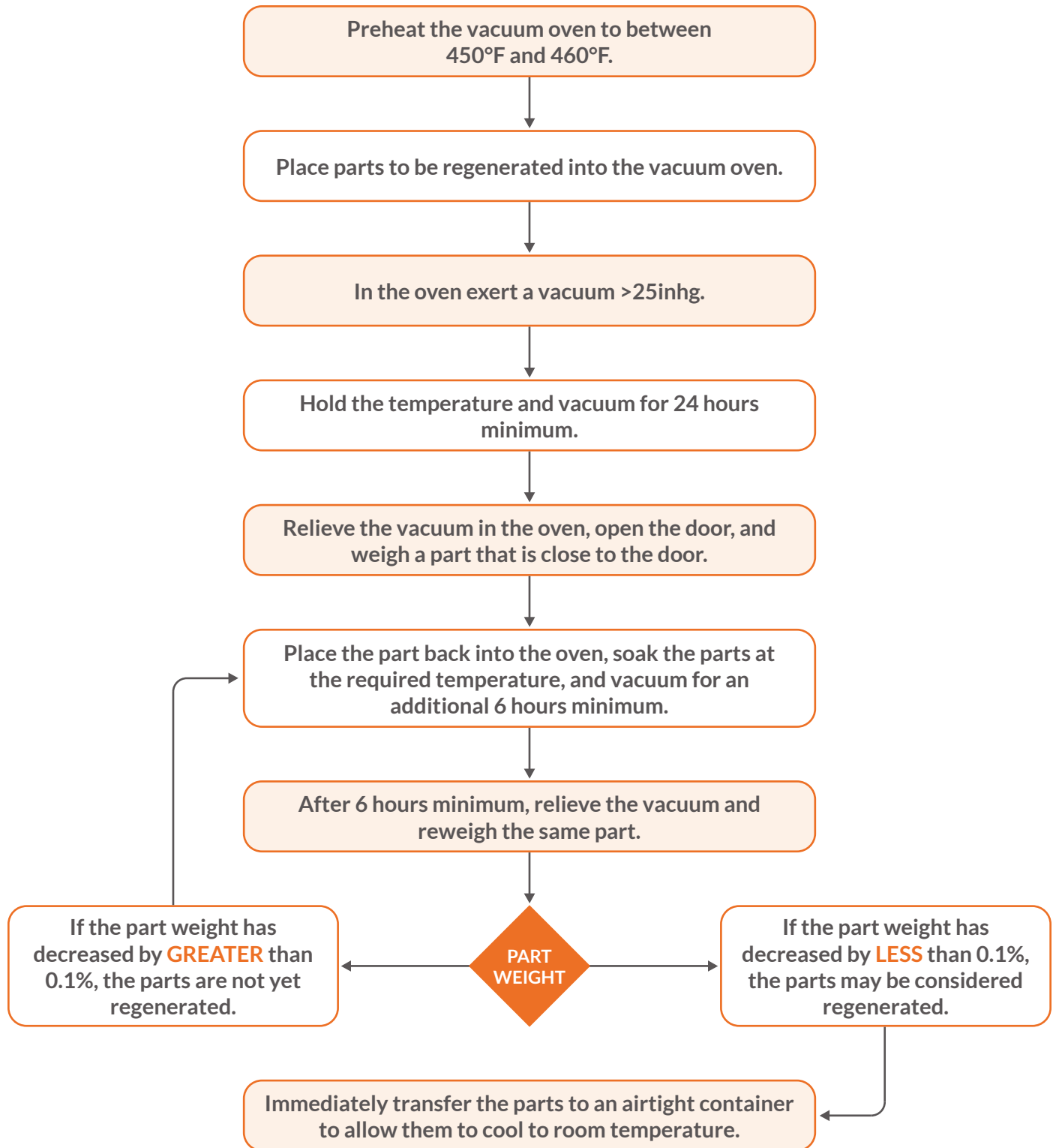
#### Vacuum Pump

*(Note: a vacuum pump is specialized to maintain the pressure differential in the oven and will run constantly throughout the regeneration procedure.)*

#### Airtight Container Capable of Withstanding a Vacuum



# Regeneration Procedure:



**Note:** As the parts cool to room temperature, they may exert a vacuum inside the container.