

4

3

2

1

REVISIONS				
ZONE	LTR.	DESCRIPTION	DATE	APPROVED

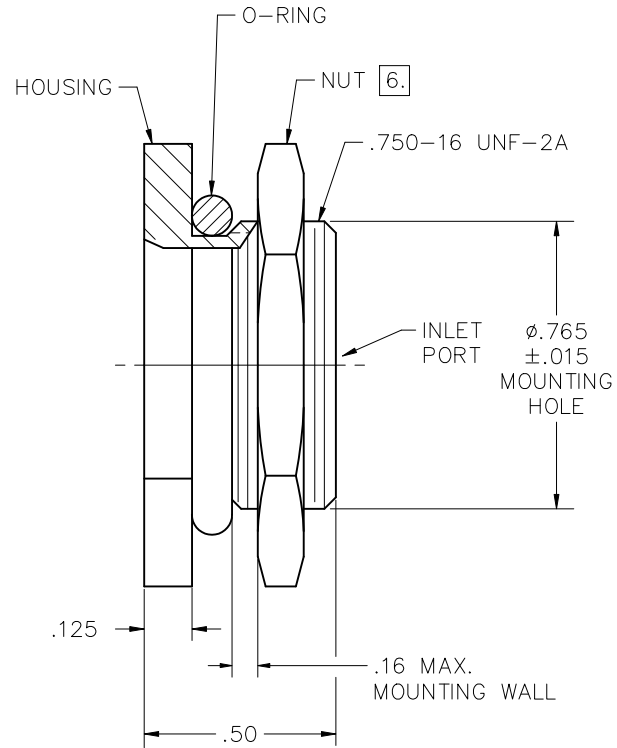
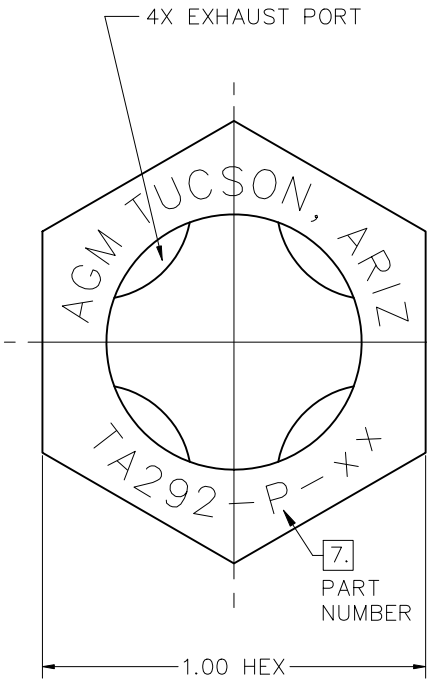
NOTES UNLESS OTHERWISE SPECIFIED

- 1. DESCRIPTION: VALVE, BREATHER, PRESSURE RELIEF.
- 2. PERFORMANCE: SEE TABLE ON SHEET 2.
- 3. THIS VALVE IS NOT REPAIRABLE EXCEPT BY AGM CONTAINER CONTROLS, INC.
- 4. MATERIALS:
- 4.1 HOUSING AND NUT: ALUMINUM ALLOY.
- 4.2 O-RING: AS3582-115.

5. FINISH: HOUSING AND NUT ANODIZED IAW MIL-A-8625, TYPE II, CLASS 2, DYED BLACK.

6. RECOMMENDED INSTALLATION TORQUE 30 ±5 INCH POUNDS

7. IDENTIFICATION: PART MARK IN APPROXIMATE LOCATION SHOWN.



(OUT OF CONTAINER) ← PRESSURE RELIEF AIR FLOW →

INTERPRET DIMENSIONS AND TOLERANCES IAW ASME Y14.5M-1994				CONTRACT	
UNLESS OTHERWISE SPECIFIED DIMENSIONS ARE IN INCHES				DRAWN	DATE
TOLERANCES:				R.CASAD	1-18-22
DECIMALS		ANGLES		CHECK	
.XX ±.015		±.5°		<div style="border: 1px solid green; padding: 2px; display: inline-block;"> APPROVED <i>By Eric Zuercher at 1:58 pm, Jan 20, 2022</i> </div>	
.XXX ±.010					
DO NOT SCALE DRAWING					
FINISH					
5.					
PART DASH NO.	NEXT QTY. REQ'D PER ASSY.	FINAL	NEXT ASSY.	USED ON	SIMILAR TO
APPLICATION			ACT. WT.	CALC. WT.	
				CUSTOMER	

agm CONTAINER CONTROLS, INC. P.O. BOX 40020 - TUCSON, ARIZONA 85717-0020			
TITLE VALVE, BREATHER PRESSURE RELIEF			
SIZE	FSCM NO.	DWG. NO.	REV
C	08992	TA292-P	-
SCALE 2/1	RELEASE DATE	SHEET	1 OF 2

4

3

2

1

REVISIONS

ZONE	LTR.	DESCRIPTION	DATE	APPROVED

CONTACT AGM FOR AVAILABILITY OF SETTINGS IN ADDITION TO THOSE SHOWN BELOW.

ONE-WAY, PRESSURE, VALVE PERFORMANCE				
PART NUMBER	PRESSURE SIDE (FLOW OUT)			VACUUM SIDE (FLOW IN)
	MINIMUM FLOW RATE (SCFM BY PSID)	RESEAL PRESSURE AFTER CRACK, MIN (PSID)	CRACKING PRESSURE RANGE (PSID)	
TA292-P-025C	0.50 BY 1.65	0.05	0.10 - 0.45	NO FLOW BELOW 10.0 PSI
TA292-P-05	0.50 BY 2.00	0.50	N/R	NO FLOW BELOW 15.0 PSI
TA292-P-10	0.50 BY 2.50	1.00	N/R	NO FLOW BELOW 15.0 PSI
TA292-P-15	0.50 BY 3.00	1.50	N/R	NO FLOW BELOW 15.0 PSI
TA292-P-20C	0.50 BY 3.00	1.20	1.60 - 2.40	NO FLOW BELOW 15.0 PSI
TA292-P-20	0.50 BY 3.50	2.00	N/R	NO FLOW BELOW 15.0 PSI
TA292-P-25	1.00 BY 4.00	2.50	N/R	NO FLOW BELOW 15.0 PSI
TA292-P-30C	0.50 BY 4.00	2.00	2.50 - 3.50	NO FLOW BELOW 15.0 PSI
TA292-P-30	0.50 BY 4.50	3.00	N/R	NO FLOW BELOW 15.0 PSI
TA292-P-40	0.50 BY 6.50	4.00	N/R	NO FLOW BELOW 15.0 PSI
TA292-P-50	0.50 BY 7.00	5.00	N/R	NO FLOW BELOW 15.0 PSI

SIZE C	FSCM NO. 08992	DWG. NO. TA292-P	REV -
SCALE NONE	SHEET 2		

4

3

2

1