

8 7 6 5 4 3 2 1

REVISIONS				
ZONE	LTR.	DESCRIPTION	DATE	APPROVED
APPROVED By Eric Zuercher at 2:27 pm, Oct 04, 2021				

NOTES UNLESS OTHERWISE SPECIFIED:

1. NOMENCLATURE: VALVE, BREATHER, TWO-WAY RELIEF WITH MANUAL RELEASE BUTTON, AND REPLACEABLE DESICCANT CARTRIDGE (OPTIONS WITH MOUNTING FLANGE AND RFI SHIELDING AVAILABLE).
2. REFERENCE SPECIFICATIONS: SAE AS27166, TYPE III, WITH MODIFIED PERFORMANCE AS SHOWN IN TABLE ON SHEET 3.
3. FLOW PERFORMANCE: SEE TABLE ON SHEET 3.

4. MATERIALS:

- 4.1 VALVE HOUSING, COVER, MANUAL RELEASE BUTTON, HEX NUT, WASHER, MOUNTING FLANGE AND RFI HOUSING (IF APPLICABLE): ALUMINUM ALLOYS.
- 4.2 DESICCANT TUBE AND FILTERS: POROUS HDPE, 15-90 MICRON NOMINAL PORE SIZE.
- 4.3 VALVE GASKET: SILICONE RUBBER IAW A-A-59588, CLASS 2A OR 2B, GRADE 60, COLOR RED.
- 4.4 ENVIRONMENTAL GASKET (IF APPLICABLE): SYNTHETIC RUBBER IAW MIL-PRF-6855, CLASS 2, TYPE A, GRADE 60, COLOR BLACK.
- 4.5 CONDUCTIVE O-RING (IF APPLICABLE): SILVER PLATED, ALUMINUM FILLED, SILICONE ELASTOMER IAW MIL-DTL-83528, TYPE B.
- 4.6 DESICCANT: MOLECULAR SIEVE OR SILICA GEL. EACH INCH OF DESICCANT CARTRIDGE HOLDS APPROXIMATELY SIX GRAMS OF DESICCANT.

5. FINISHES:

- 5.1 VALVE HOUSING AND MOUNTING FLANGE (IF APPLICABLE), ANODIZED IAW MIL-A-8625, TYPE II, CLASS 1.
- 5.2 RFI/EMI HOUSING (IF APPLICABLE): CONVERSION COAT IAW MIL-DTL-5541, TYPE I, CLASS 3.
- 5.3 MANUAL RELEASE BUTTON: ANODIZED IAW MIL-A-8625, TYPE III, CLASS 2, COLOR BLACK.

6. RECOMMENDED INSTALLATION TORQUE 30-40 IN-LBS.

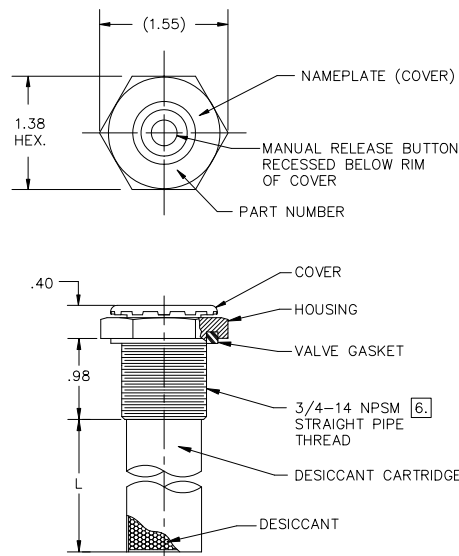
7. RECOMMENDED INSTALLATION TORQUE 70-80 IN-LBS.

PART NUMBER CONVENTION: TA333-P-V-DL-F

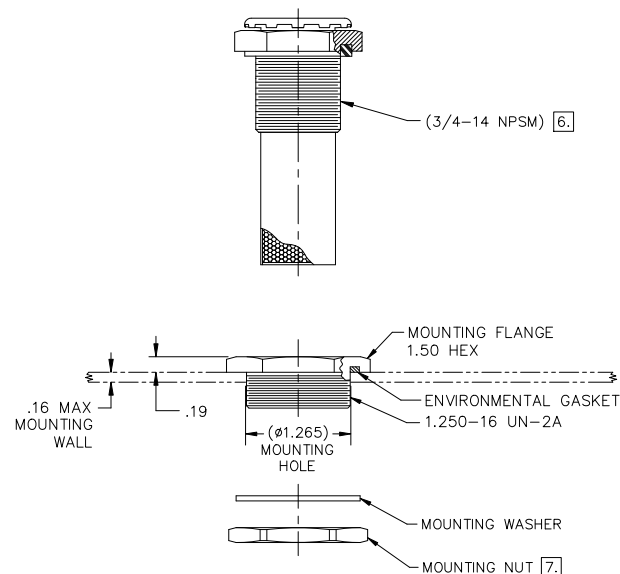
P = PRESSURE SETTING SEE TABLE ON SHEET 3
 V = VACUUM SETTING SEE TABLE ON SHEET 3
 D = DESICCANT TYPE MS (MOL SIEVE) OR SG (SILICA GEL)
 L = LENGTH BETWEEN .5 AND 6 TO NEAREST .1. SEE FIGURE FOR FITTING OPTION -0
 F = FITTING OPTION 0, 1, 2, OR 3. SEE FIGURES

EXAMPLE: TA333-05-05-MS3.0-1
 (TA333-05-05-R VALVE, WITH 3.0" LONG CARTRIDGE CONTAINING MOLECULAR SIEVE, WITH A MOUNTING FLANGE)

AIR FLOW 'P' (PRESSURE RELIEF)
 AIR FLOW 'V' (VACUUM RELIEF)



FITTING OPTION: -0
 NO MOUNTING HARDWARE (FOR INSTALLATION INTO A THREADED HOLE)



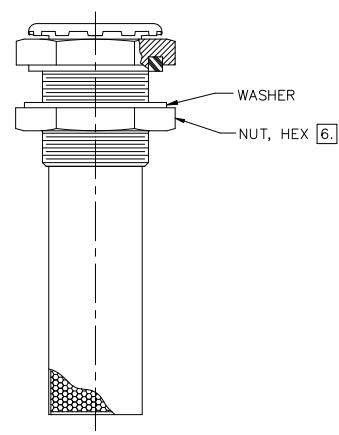
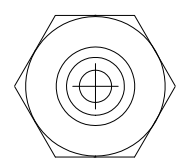
FITTING OPTION: -1
 MOUNTING FLANGE
 FOR VALVE AND CARTRIDGE DIMENSIONS, SEE FITTING OPTION -0 FIGURE.

PART QTY. RECD PER ASSY.		NEXT FINAL		NEXT ASSY.		USED ON		SIMILAR TO		PCT. WT. DATE: WT.		INTERPRET DIMENSIONS AND TOLERANCES IAW ASME Y14.5M-1994 UNLESS OTHERWISE SPECIFIED DIMENSIONS ARE IN INCHES DECIMALS .XX DECIMALS .XXX .XXX ±.010 ANGLES ±.5° DO NOT SCALE DRAWING FINISH 5.		CONTRACT DATE 11-10-20 DRAWN R. CASAD CHECK E. ZUERCHER APPROVED E. ZUERCHER MANUFACTURING DATE 12-21-20 CUSTOMER		GGM CONTAINER CONTROLS, INC. P.O. BOX 40020 - TUCSON, ARIZONA 85717-0020 BREATHING DESICCATOR WITH MANUAL RELIEF		SIZE FSCM NO. DWG. NO. REV D 08992 TA333-PVDLF A	
SCALE 1/1												RELEASE DATE		SHEET 1 OF 3		FILE TA333-PVDLF			

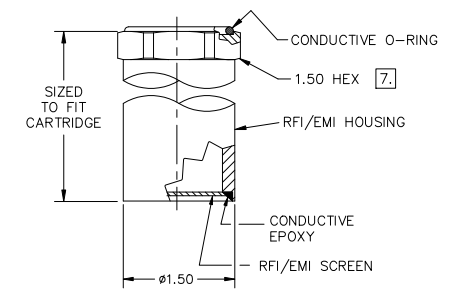
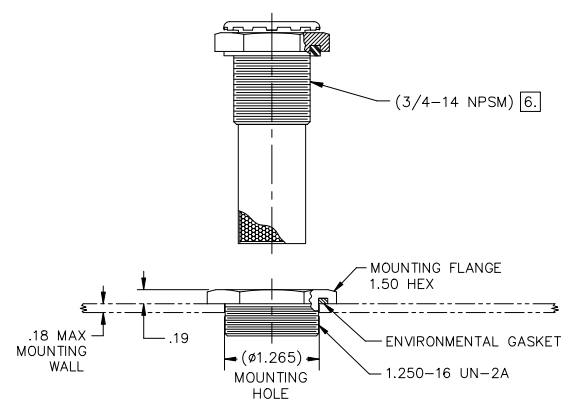
8 7 6 5 4 3 2 1

REVISIONS				
ZONE	LTR.	DESCRIPTION	DATE	APPROVED

AIR FLOW "P"
(OUT OF CONTAINER)
AIR FLOW "V"
(INTO CONTAINER)



FITTING OPTION: -2
HEX NUT AND WASHER.
FOR VALVE AND CARTRIDGE DIMENSIONS, SEE FITTING
OPTION -0 FIGURE.



FITTING OPTION: -3
MOUNTING FLANGE AND RFI/EMI HOUSING.
FOR VALVE AND CARTRIDGE DIMENSIONS, SEE FITTING
OPTION -0 FIGURE.

SIZE	FSCM NO.	DWG. NO.	REV
D	08992	TA333-PVDLF	A
SCALE	1	RELEASE DATE	SHEET 2

REVISIONS				
ZONE	LTR.	DESCRIPTION	DATE	APPROVED

DASH NUMBERS FOR PRESSURE AND VACUUM SIDE MAY BE USED IN ANY COMBINATION (E.G., TA333-05-15). CONTACT AGM FOR AVAILABILITY OF SETTINGS IN ADDITION TO THOSE SHOWN BELOW.

RESEAL VALVE PERFORMANCE						
SETTING NUMBER	PRESSURE SIDE (FLOW OUT)			VACUUM SIDE (FLOW IN)		
	CRACKING PRESSURE RANGE (PSID)	RESEAL PRESSURE AFTER CRACK, MIN (PSID)	MINIMUM FLOW RATE (SCFM BY PSID)	CRACKING PRESSURE RANGE (PSID)	RESEAL PRESSURE AFTER CRACK, MIN (PSID)	MINIMUM FLOW RATE (SCFM BY PSID)
TA333-025-025-DL-F	0.25-0.75	0.25	0.7 BY 1.75	0.25-0.75	0.25	1.0 BY 1.75
TA333-05-05-DL-F	0.50-1.00	0.50	0.7 BY 2.00	0.50-1.00	0.50	1.0 BY 2.00
TA333-10-10-DL-F	1.00-1.50	1.00	0.6 BY 2.50	1.00-1.50	1.00	0.8 BY 2.50
TA333-15-15-DL-F	1.50-2.25	1.50	0.5 BY 3.00	1.50-2.25	1.50	0.7 BY 3.00
TA333-20-20-DL-F	2.00-3.00	2.00	0.5 BY 3.50	2.00-3.00	2.00	0.7 BY 3.50
TA333-25-25-DL-F	2.50-3.50	2.50	0.3 BY 4.00	2.50-3.50	2.50	0.6 BY 4.00
TA333-30-30-DL-F	3.00-4.00	3.00	0.3 BY 4.50	3.00-4.00	3.00	0.6 BY 4.50
TA333-40-40-DL-F	4.00-5.50	4.00	0.2 BY 5.50	4.00-5.50	4.00	0.2 BY 5.50
TA333-50-50-DL-F	5.00-6.50	5.00	0.2 BY 8.00	5.00-6.50	5.00	0.2 BY 8.00

CRACKING VALVE PERFORMANCE						
SETTING NUMBER	PRESSURE SIDE (FLOW OUT)			VACUUM SIDE (FLOW IN)		
	CRACKING PRESSURE RANGE	RESEAL PRESSURE AFTER CRACK, MIN	MINIMUM FLOW RATE (SCFM BY PSID)	CRACKING PRESSURE RANGE	RESEAL PRESSURE AFTER CRACK, MIN	MINIMUM FLOW RATE (SCFM BY PSID)
TA333-025C-025C-DL-F	0.10-0.40	0.10	0.8 BY 1.75	0.10-0.40	0.10	0.8 BY 1.75
TA333-05C-05C-DL-F	0.30-0.70	0.10	0.7 BY 2.00	0.30-0.70	0.10	1.0 BY 2.00
TA333-10C-10C-DL-F	0.75-1.25	0.50	0.7 BY 2.00	0.75-1.25	0.50	1.0 BY 2.00
TA333-15C-15C-DL-F	1.25-1.75	1.00	0.7 BY 3.00	1.25-1.75	1.00	0.7 BY 3.00
TA333-20C-20C-DL-F	1.75-2.25	1.00	0.5 BY 3.50	1.75-2.25	1.00	0.7 BY 3.50