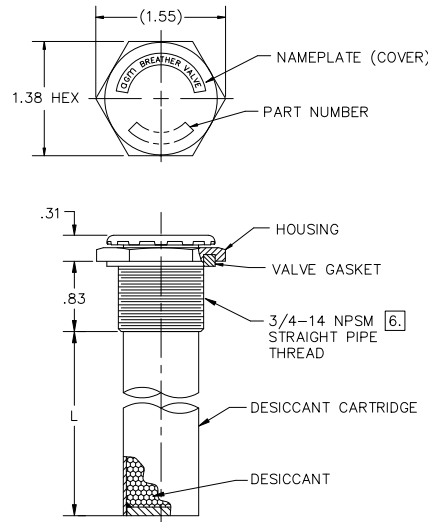


REVISIONS				
ZONE	LTR.	DESCRIPTION	DATE	APPROVED
<b>APPROVED</b> By Eric Zuercher at 2:26 pm, Oct 04, 2021				

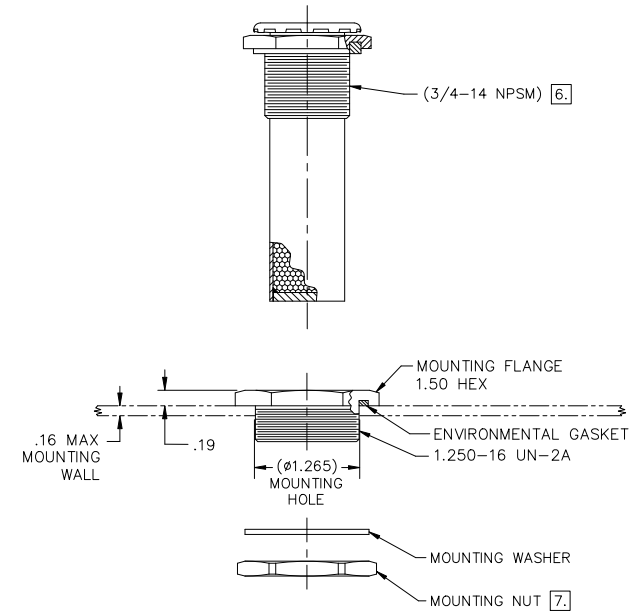
NOTES UNLESS OTHERWISE SPECIFIED:

1. NOMENCLATURE: VALVE, BREATHER, TWO-WAY RELIEF WITH REPLACEABLE DESICCANT CARTRIDGE (OPTIONS WITH MOUNTING FLANGE AND RFI SHIELDING AVAILABLE).
2. REFERENCE SPECIFICATIONS: SAE AS27166, TYPE III, WITH MODIFIED PERFORMANCE AS SHOWN IN TABLE ON SHEET 3.
3. FLOW PERFORMANCE: SEE TABLE ON SHEET 3.
4. MATERIALS:
  - 4.1 VALVE HOUSING, HEX NUT, WASHER, MOUNTING FLANGE AND RFI HOUSING (IF APPLICABLE): ALUMINUM ALLOYS.
  - 4.2 DESICCANT TUBE AND FILTERS: POROUS HDPE, 15-90 MICRON NOMINAL PORE SIZE.
  - 4.3 VALVE GASKET: SILICONE RUBBER IAW A-A-59588, CLASS 2A OR 2B, GRADE 60, COLOR RED.
  - 4.4 ENVIRONMENTAL GASKET (IF APPLICABLE): SYNTHETIC RUBBER IAW MIL-PRF-6855, CLASS 2, TYPE A, GRADE 60, COLOR BLACK.
  - 4.5 CONDUCTIVE O-RING (IF APPLICABLE): SILVER PLATED, ALUMINUM FILLED, SILICONE ELASTOMER IAW MIL-DTL-83528, TYPE B.
  - 4.6 DESICCANT: MOLECULAR SIEVE OR SILICA GEL. EACH INCH OF DESICCANT CARTRIDGE HOLDS APPROXIMATELY SIX GRAMS OF DESICCANT
5. FINISHES:
  - 5.1 VALVE HOUSING AND MOUNTING FLANGE (IF APPLICABLE), ANODIZED IAW MIL-A-8625, TYPE II, CLASS 1.
  - 5.2 RFI/EMI HOUSING (IF APPLICABLE): CONVERSION COAT IAW MIL-DTL-5541, TYPE I, CLASS 3.
6. RECOMMENDED INSTALLATION TORQUE 30-40 IN-LBS.
7. RECOMMENDED INSTALLATION TORQUE 70-80 IN-LBS.

AIR FLOW 'P' (PRESSURE RELIEF)  
 AIR FLOW 'V' (VACUUM RELIEF)



FITTING OPTION: -0  
 NO MOUNTING HARDWARE (FOR INSTALLATION INTO A THREADED HOLE)



FITTING OPTION: -1  
 MOUNTING FLANGE  
 FOR VALVE AND CARTRIDGE DIMENSIONS, SEE FITTING OPTION -0 FIGURE.

PART NUMBER CONVENTION: TA330-P-V-DL-F

P = PRESSURE SETTING SEE TABLE ON SHEET 3  
 V = VACUUM SETTING SEE TABLE ON SHEET 3  
 D = DESICCANT TYPE MS (MOL SIEVE) OR SG (SILICA GEL)  
 L = LENGTH BETWEEN .5 AND 6, TO NEAREST .1, SEE FIGURE FOR FITTING OPTION -0  
 F = FITTING OPTION 0, 1, 2, OR 3. SEE FIGURES

EXAMPLE: TA330-05-05-05-MS3.0-1  
 (TA330-05-05 VALVE, WITH 3.0" LONG CARTRIDGE CONTAINING MOLECULAR SIEVE, WITH A MOUNTING FLANGE)

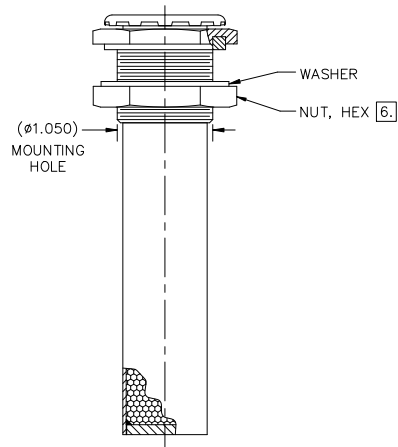
INTERPRET DIMENSIONS AND TOLERANCES IAW ASME Y14.5M-1994 UNLESS OTHERWISE SPECIFIED DIMENSIONS ARE IN INCHES DECIMALS .XX DECIMALS .06 ANGLES ±.5° .XXX ±.010		CONTRACT NO. DATE DRAWN R. CASAD 11-10-20 CHECK E. ZUERCHER 12-21-20 APPROVED E. ZUERCHER 12-21-20 MANUFACTURING DATE CUSTOMER		GGM CONTAINER CONTROLS, INC. P.O. BOX 40020 - TUCSON, ARIZONA 85717-0020 TITLE <b>BREATHING DESICCATOR</b>	
DO NOT SCALE DRAWING PART QTY. NEXT FINAL NEXT ASSY. USED ON DASH INO. PER ASSY. APPLICATION		SCALE 1/1 RELEASE DATE SHEET 1 OF 3		SIZE FSCM NO. DWG. NO. REV D 08992 TA330-PVDLF A	

8 7 6 5 4 3 2 1

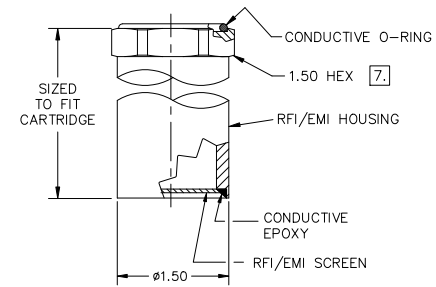
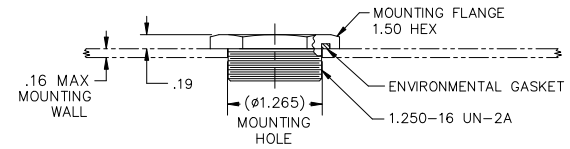
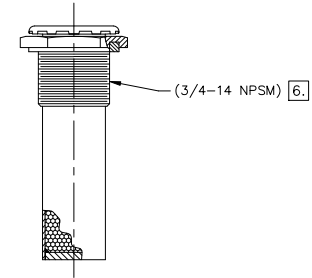
REVISIONS				
ZONE	LTR.	DESCRIPTION	DATE	APPROVED

D  
C  
B  
A

↑ (OUT OF CONTAINER)  
↓ (INTO CONTAINER)



FITTING OPTION: -2  
HEX NUT AND WASHER.  
FOR VALVE AND CARTRIDGE DIMENSIONS, SEE FITTING  
OPTION -0 FIGURE.



FITTING OPTION: -3  
MOUNTING FLANGE AND RFI/EMI HOUSING.  
FOR VALVE AND CARTRIDGE DIMENSIONS, SEE FITTING  
OPTION -0 FIGURE.

SIZE	FSCM NO.	DWG. NO.	REV
D	08992	TA330-PVDLF	A
SCALE	1	RELEASE DATE	SHEET 2

REVISIONS				
ZONE	LTR.	DESCRIPTION	DATE	APPROVED

DASH NUMBERS FOR PRESSURE AND VACUUM SIDE MAY BE USED IN ANY COMBINATION (E.G., TA330-05-15). CONTACT AGM FOR AVAILABILITY OF SETTINGS IN ADDITION TO THOSE SHOWN BELOW.

RESEAL VALVE PERFORMANCE						
SETTING NUMBER	PRESSURE SIDE (FLOW OUT)			VACUUM SIDE (FLOW IN)		
	CRACKING PRESSURE RANGE (PSID)	RESEAL PRESSURE AFTER CRACK, MIN (PSID)	MINIMUM FLOW RATE (SCFM BY PSID)	CRACKING PRESSURE RANGE (PSID)	RESEAL PRESSURE AFTER CRACK, MIN (PSID)	MINIMUM FLOW RATE (SCFM BY PSID)
TA330-025-025-DL-F	0.25-0.75	0.25	0.7 BY 1.75	0.25-0.75	0.25	1.0 BY 1.75
TA330-05-05-DL-F	0.50-1.00	0.50	0.7 BY 2.00	0.50-1.00	0.50	1.0 BY 2.00
TA330-10-10-DL-F	1.00-1.50	1.00	0.6 BY 2.50	1.00-1.50	1.00	0.8 BY 2.50
TA330-15-15-DL-F	1.50-2.25	1.50	0.5 BY 3.00	1.50-2.25	1.50	0.7 BY 3.00
TA330-20-20-DL-F	2.00-3.00	2.00	0.5 BY 3.50	2.00-3.00	2.00	0.7 BY 3.50
TA330-25-25-DL-F	2.50-3.50	2.50	0.3 BY 4.00	2.50-3.50	2.50	0.6 BY 4.00
TA330-30-30-DL-F	3.00-4.00	3.00	0.3 BY 4.50	3.00-4.00	3.00	0.6 BY 4.50
TA330-40-40-DL-F	4.00-5.50	4.00	0.2 BY 5.50	4.00-5.50	4.00	0.2 BY 5.50
TA330-50-50-DL-F	5.00-6.50	5.00	0.2 BY 8.00	5.00-6.50	5.00	0.2 BY 8.00

CRACKING VALVE PERFORMANCE						
SETTING NUMBER	PRESSURE SIDE (FLOW OUT)			VACUUM SIDE (FLOW IN)		
	CRACKING PRESSURE RANGE (PSID)	RESEAL PRESSURE AFTER CRACK, MIN (PSID)	MINIMUM FLOW RATE (SCFM BY PSID)	CRACKING PRESSURE RANGE (PSID)	RESEAL PRESSURE AFTER CRACK, MIN (PSID)	MINIMUM FLOW RATE (SCFM BY PSID)
TA330-025C-025C-DL-F	0.10-0.40	0.10	0.9 BY 1.75	0.10-0.40	0.10	0.9 BY 1.75
TA330-05C-05C-DL-F	0.30-0.70	0.10	0.7 BY 2.00	0.30-0.70	0.10	1.0 BY 2.00
TA330-10C-10C-DL-F	0.75-1.25	0.50	0.7 BY 2.00	0.75-1.25	0.50	1.0 BY 2.00
TA330-15C-15C-DL-F	1.25-1.75	1.00	0.7 BY 3.00	1.25-1.75	1.00	0.7 BY 3.00
TA330-20C-20C-DL-F	1.75-2.25	1.00	0.5 BY 3.50	1.75-2.25	1.00	0.7 BY 3.50