

4

3

2

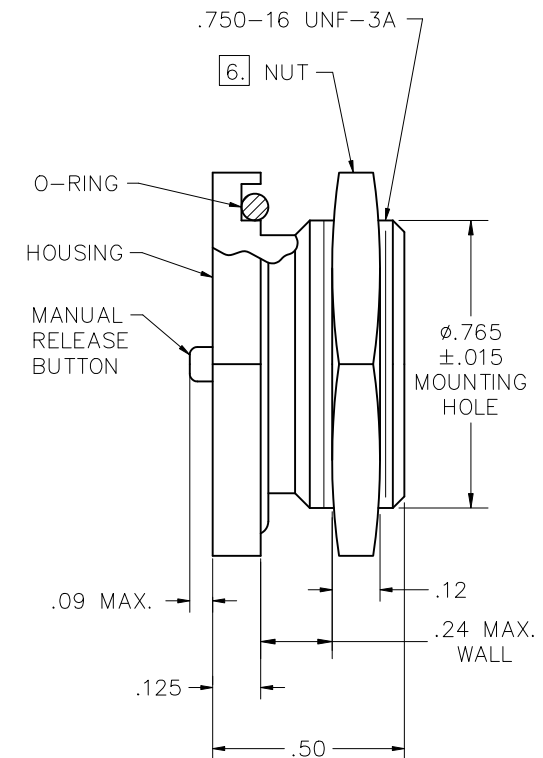
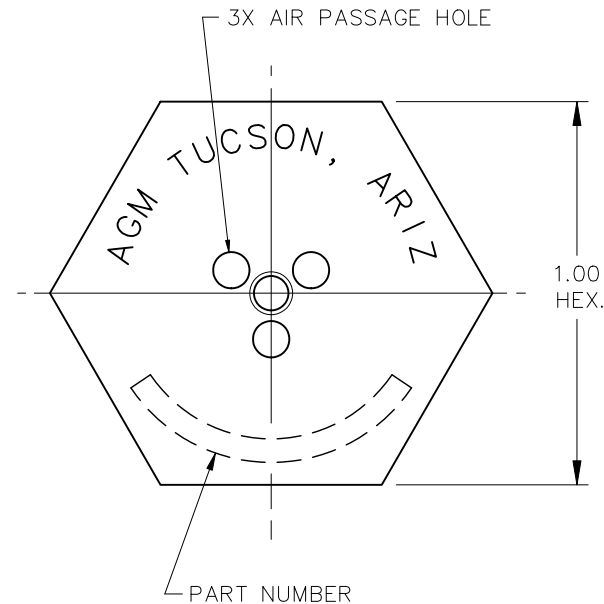
1

REVISIONS				
ZONE	LTR.	DESCRIPTION	DATE	APPROVED

APPROVED
By Eric Zuercher at 10:14 am, Jul 21, 2021

NOTES UNLESS OTHERWISE SPECIFIED

- DESCRIPTION: VALVE, BREATHER, TWO-WAY RELIEF WITH MANUAL RELEASE BUTTON.
- PERFORMANCE: SEE TABLE ON SHEET 2.
- THIS VALVE IS NOT REPAIRABLE EXCEPT BY AGM CONTAINER CONTROLS, INC.
- MATERIALS:
 - HOUSING AND NUT: ALUMINUM ALLOY.
 - MANUAL RELEASE BUTTON: STAINLESS STEEL.
 - O-RING: MS28775-018.
- FINISH: HOUSING AND NUT ANODIZED IAW MIL-A-8625, TYPE II, CLASS 2, DYED BLACK.
- RECOMMENDED INSTALLATION TORQUE 30 ±5 INCH POUNDS
- IDENTIFICATION: PART MARK IN APPROXIMATE LOCATION SHOWN.



AIR FLOW "P" ← (OUT OF CONTAINER)

AIR FLOW "V" → (INTO CONTAINER)

					INTERPRET DIMENSIONS AND TOLERANCES IAW ASME Y14.5M-1994		CONTRACT		agm CONTAINER CONTROLS, INC.			
					UNLESS OTHERWISE SPECIFIED DIMENSIONS ARE IN INCHES TOLERANCES:		DRAWN		P.O. BOX 40020 - TUCSON, ARIZONA 85717-0020			
					DECIMALS .XX ±.015 .XXX ±.010		CHECK		TITLE			
					ANGLES ±.5°		DATE		VALVE, BREATHER TWO-WAY RELIEF			
					DO NOT SCALE DRAWING		E.ZUERCHER		REV			
					FINISH		3-22-16		A			
					5.		APPROVED		SIZE			
					SIMILAR TO		E.ZUERCHER		FSCM NO.			
					ACT. WT. CALC. WT.		MANUFACTURING		DWG. NO.			
					CUSTOMER				TA292-R			
PART DASH NO.	NEXT QTY. REQ'D PER ASSY.	FINAL	NEXT ASSY.	USED ON	APPLICATION		SCALE 2/1		RELEASE DATE		SHEET 1 OF 2	

4

3

2

1

4

3

2

1

REVISIONS

ZONE

LTR.

DESCRIPTION

DATE

APPROVED

DASH NUMBERS FOR PRESSURE AND VACUUM SIDE MAY BE USED IN ANY COMBINATION (E.G., TA292-05-15-R).
CONTACT AGM FOR AVAILABILITY OF SETTINGS IN ADDITION TO THOSE SHOWN BELOW.

RESEAL VALVE PERFORMANCE

PART NUMBER	PRESSURE SIDE (FLOW OUT)			VACUUM SIDE (FLOW IN)		
	CRACKING PRESSURE RANGE (PSID)	RESEAL PRESSURE AFTER FLOW, MIN (PSID)	MINIMUM FLOW RATE (SCFM BY PSID)	CRACKING PRESSURE RANGE (PSID)	RESEAL PRESSURE AFTER FLOW, MIN (PSID)	MINIMUM FLOW RATE (SCFM BY PSID)
TA292-025-025-R	N/R	0.25	0.5 BY 1.75	N/R	0.25	0.5 BY 1.75
TA292-05-05-R	N/R	0.50	0.5 BY 2.00	N/R	0.50	0.5 BY 2.00
TA292-10-10-R	N/R	1.00	0.5 BY 2.50	N/R	1.00	0.5 BY 2.50
TA292-15-15-R	N/R	1.50	0.5 BY 3.00	N/R	1.50	0.5 BY 3.00
TA292-20-20-R	N/R	2.00	0.5 BY 3.50	N/R	2.00	0.5 BY 3.50
TA292-25-25-R	N/R	2.50	0.5 BY 4.50	N/R	2.50	0.5 BY 4.50
TA292-30-30-R	N/R	3.00	0.5 BY 5.00	N/R	3.00	0.5 BY 5.00
TA292-50-50-R	N/R	5.00	0.4 BY 6.50	N/R	5.00	0.5 BY 6.50

CRACKING VALVE PERFORMANCE

PART NUMBER	PRESSURE SIDE (FLOW OUT)			VACUUM SIDE (FLOW IN)		
	CRACKING PRESSURE RANGE (PSID)	RESEAL PRESSURE AFTER CRACK, MIN (PSID)	MINIMUM FLOW RATE (SCFM BY PSID)	CRACKING PRESSURE RANGE (PSID)	RESEAL PRESSURE AFTER CRACK, MIN (PSID)	MINIMUM FLOW RATE (SCFM BY PSID)
TA292-025C-025C-R	0.10 - 0.40	0.10	0.5 BY 1.50	0.10 - 0.40	0.10	0.5 BY 1.50
TA292-05C-05C-R	0.30 - 0.70	0.10	0.5 BY 2.00	0.30 - 0.70	0.10	0.5 BY 2.00
TA292-10C-10C-R	0.75 - 1.25	0.20	0.5 BY 2.50	0.75 - 1.25	0.20	0.5 BY 2.50
TA292-15C-15C-R	1.20 - 1.80	N/R	0.5 BY 3.00	1.2 - 1.80	N/R	0.5 BY 3.00
TA292-20C-20C-R	1.60 - 2.40	1.20	0.5 BY 3.00	1.60 - 2.40	1.20	0.5 BY 3.00
TA292-25C-25C-R	2.00 - 3.00	1.50	0.5 BY 3.50	2.00 - 3.00	1.50	0.5 BY 3.50
TA292-30C-30C-R	2.50 - 3.50	2.00	0.5 BY 4.00	2.50 - 3.50	2.00	0.5 BY 4.00

SIZE	FSCM NO.	DWG. NO.	REV
C	08992	TA292-R	A
SCALE	NONE	SHEET	2

4

3

2

1