

4

3

2

1

REVISIONS				
ZONE	LTR.	DESCRIPTION	DATE	APPROVED
<small>APPROVED By Philip Grossenk at 2:31 pm, Feb 05, 2015</small>				

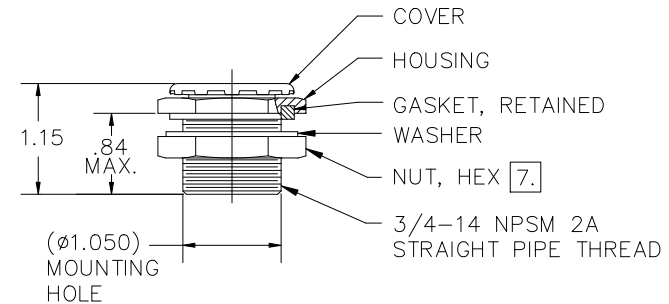
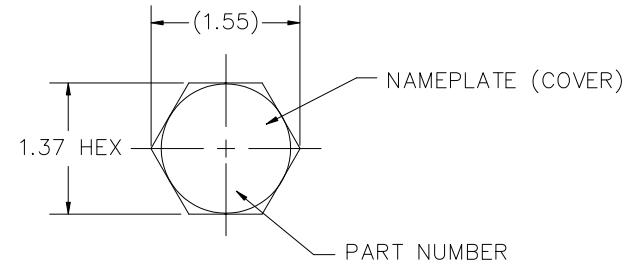
NOTES UNLESS OTHERWISE SPECIFIED:

1. NOMENCLATURE: VALVE, BREATHER, TWO-WAY RELIEF.
2. APPLICABLE SPECIFICATION: SAE AS27166, TYPE III, WITH MODIFIED PERFORMANCE AS SHOWN IN TABLES ON SHEETS 2, 3, AND 4.
3. PERFORMANCE: SEE TABLES ON SHEETS 2, 3, AND 4.
4. MATERIALS:
  - 4.1 HOUSING, COVER, NUT, AND WASHER: ALUMINUM ALLOYS.
  - 4.2 GASKET AND INTERNAL SEALS (NOT SHOWN): SILICONE RUBBER IAW A-A-59588.
5. FINISH: HOUSING, NUT, AND WASHER, ANODIZED IAW MIL-A-8625, TYPE II, CLASS 1.
6. THE FOLLOWING ITEMS FURNISHED AS PART OF THIS ASSEMBLY MAY BE PURCHASED SEPARATELY:

P/N 300200	GASKET
300013-16	WASHER
300003-16	NUT

7. RECOMMENDED INSTALLATION TORQUE: 30-40 IN-LBS.

AIR FLOW "P" (OUT OF CONTAINER)  
 AIR FLOW "V" (INTO CONTAINER)



				INTERPRET DIMENSIONS AND TOLERANCES IAW ANSI Y14.5M-1982 UNLESS OTHERWISE SPECIFIED DIMENSIONS ARE IN INCHES TOLERANCES: DECIMALS .XX ±.02 .XXX ±.010 ANGLES ±.5°		CONTRACT DRAWN M.ONTIVEROS DATE 3-4-16 CHECK E.ZUERCHER DATE 3-4-16 APPROVED E.ZUERCHER DATE 3-4-16 MANUFACTURING		agm CONTAINER CONTROLS, INC. P.O. BOX 40020 - TUCSON, ARIZONA 85717-0020			
				DO NOT SCALE DRAWING				TITLE VALVE, BREATHER			
				FINISH 5.				SIZE C FSCM NO. 08992 DWG. NO. TA330		REV B	
PART DASH NO.	NEXT	FINAL	NEXT ASSY.	USED ON	SIMILAR TO	ACT. WT.	CALC. WT.	CUSTOMER	SCALE 1	RELEASE DATE	SHEET 1 OF 4
APPLICATION											

4

3

2

1

4

3

2

1

## REVISIONS

ZONE	LTR.	DESCRIPTION	DATE	APPROVED

## RESEAL VALVE PERFORMANCE

PART NUMBER	PRESSURE SIDE (FLOW OUT)			VACUUM SIDE (FLOW IN)		
	CRACKING PRESSURE RANGE (PSID)	RESEAL PRESSURE AFTER CRACK, MIN (PSID)	MINIMUM FLOW RATE (SCFM BY PSID)	CRACKING PRESSURE RANGE (PSID)	RESEAL PRESSURE AFTER CRACK, MIN (PSID)	MINIMUM FLOW RATE (SCFM BY PSID)
TA330-025-025	0.25-0.75	0.25	3 BY 1.75	0.25-0.75	0.25	4 BY 1.75
TA330-05-05	0.50-1.00	0.50	3 BY 2.00	0.50-1.00	0.50	4 BY 2.00
TA330-05-10	0.50-1.00	0.50	3 BY 2.00	1.00-1.50	1.00	3.5 BY 2.50
TA330-05-15	0.50-1.00	0.50	3 BY 2.00	1.50-2.25	1.50	3 BY 3.00
TA330-05-20	0.50-1.00	0.50	3 BY 2.00	2.00-3.00	2.00	3 BY 3.50
TA330-05-25	0.50-1.00	0.50	3 BY 2.00	2.50-3.50	2.50	2.5 BY 4.00
TA330-05-30	0.50-1.00	0.50	3 BY 2.00	3.00-4.00	3.00	2.5 BY 4.50
TA330-10-025	1.00-1.50	1.00	2.5 BY 2.50	0.25-0.75	0.25	4 BY 1.50
TA330-10-05	1.00-1.50	1.00	2.5 BY 2.50	0.50-1.00	0.50	4 BY 2.00
TA330-10-10	1.00-1.50	1.00	2.5 BY 2.50	1.00-1.50	1.00	3.5 BY 2.50
TA330-10-15	1.00-1.50	1.00	2.5 BY 2.50	1.50-2.25	1.50	3 BY 3.00
TA330-10-20	1.00-1.50	1.00	2.5 BY 2.50	2.00-3.00	2.00	3 BY 3.50
TA330-10-25	1.00-1.50	1.00	2.5 BY 2.50	2.50-3.50	2.50	2.5 BY 4.00
TA330-10-30	1.00-1.50	1.00	2.5 BY 2.50	3.00-4.00	3.00	2.5 BY 4.50
TA330-15-05	1.50-2.25	1.50	2 BY 3.00	0.50-1.00	0.50	4 BY 2.00
TA330-15-10	1.50-2.25	1.50	2 BY 3.00	1.00-1.50	1.00	3.5 BY 2.50
TA330-15-15	1.50-2.25	1.50	2 BY 3.00	1.50-2.25	1.50	3 BY 3.00
TA330-15-20	1.50-2.25	1.50	2 BY 3.00	2.00-3.00	2.00	3 BY 3.50
TA330-15-25	1.50-2.25	1.50	2 BY 3.00	2.50-3.50	2.50	2.5 BY 4.00
TA330-15-30	1.50-2.25	1.50	2 BY 3.00	3.00-4.00	3.00	2.5 BY 4.50
TA330-20-05	2.00-3.00	2.00	2 BY 3.50	0.50-1.00	0.50	4 BY 2.00
TA330-20-10	2.00-3.00	2.00	2 BY 3.50	1.00-1.50	1.00	3.5 BY 2.50
TA330-20-15	2.00-3.00	2.00	2 BY 3.50	1.50-2.25	1.50	3 BY 3.00
TA330-20-20	2.00-3.00	2.00	2 BY 3.50	2.00-3.00	2.00	3 BY 3.50
TA330-20-25	2.00-3.00	2.00	2 BY 3.50	2.50-3.50	2.50	2.5 BY 4.00
TA330-20-30	2.00-3.00	2.00	2 BY 3.50	3.00-4.00	3.00	2.5 BY 4.50
TA330-25-05	2.50-3.50	2.50	1.5 BY 4.00	0.50-1.00	0.50	4 BY 2.00
TA330-25-10	2.50-3.50	2.50	1.5 BY 4.00	1.00-1.50	1.00	3.5 BY 2.50

SIZE C	FSCM NO. 08992	DWG. NO. TA330	REV B
SCALE NONE	SHEET 2		

4

3

2

1

4

3

2

1

## REVISIONS

ZONE	LTR.	DESCRIPTION	DATE	APPROVED
------	------	-------------	------	----------

## RESEAL VALVE PERFORMANCE

PART NUMBER	PRESSURE SIDE (FLOW OUT)			VACUUM SIDE (FLOW IN)		
	CRACKING PRESSURE RANGE (PSID)	RESEAL PRESSURE AFTER CRACK, MIN (PSID)	MINIMUM FLOW RATE (SCFM BY PSID)	CRACKING PRESSURE RANGE (PSID)	RESEAL PRESSURE AFTER CRACK, MIN (PSID)	MINIMUM FLOW RATE (SCFM BY PSID)
TA330-25-15	2.50-3.50	2.50	1.5 BY 4.00	1.50-2.25	1.50	3 BY 3.00
TA330-25-20	2.50-3.50	2.50	1.5 BY 4.00	2.00-3.00	2.00	3 BY 3.50
TA330-25-25	2.50-3.50	2.50	1.5 BY 4.00	2.50-3.50	2.50	2.5 BY 4.00
TA330-25-30	2.50-3.50	2.50	1.5 BY 4.00	3.00-4.00	3.00	2.5 BY 4.50
TA330-30-05	3.00-4.00	3.00	1.5 BY 4.50	0.50-1.00	0.50	4 BY 2.00
TA330-30-10	3.00-4.00	3.00	1.5 BY 4.50	1.00-1.50	1.00	3.5 BY 2.50
TA330-30-15	3.00-4.00	3.00	1.5 BY 4.50	1.50-2.25	1.50	3 BY 3.00
TA330-30-20	3.00-4.00	3.00	1.5 BY 4.50	2.00-3.00	2.00	3 BY 3.50
TA330-30-25	3.00-4.00	3.00	1.5 BY 4.50	2.50-3.50	2.50	2.5 BY 4.00
TA330-30-30	3.00-4.00	3.00	1.5 BY 4.50	3.00-4.00	3.00	2.5 BY 4.50
TA330-35-35	3.50-5.00	3.50	1.5 BY 5.00	3.50-5.00	3.50	2 BY 5.00
TA330-40-20	4.00-5.50	4.00	1 BY 6.00	2.00-3.00	2.00	3 BY 3.50
TA330-45-45	4.50-5.50	4.50	1 BY 6.00	4.50-5.50	4.50	1 BY 6.00
TA330-50-15	5.00-6.50	5.00	1 BY 8.00	1.50-2.25	1.50	3 BY 3.00
TA330-P-02	0.20-0.60	0.20	3 BY 1.75	N/A	N/A	NO LEAK BELOW 15
TA330-P-05	0.50-1.00	0.50	3 BY 2.00	N/A	N/A	NO LEAK BELOW 15
TA330-P-08	0.80-1.30	0.80	2.5 BY 2.23	N/A	N/A	NO LEAK BELOW 15
TA330-P-10	1.00-1.50	1.00	2.5 BY 3.00	N/A	N/A	NO LEAK BELOW 15
TA330-P-20	2.00-3.00	2.00	2 BY 3.50	N/A	N/A	NO LEAK BELOW 15
TA330-P-25	2.50-3.50	2.50	1.5 BY 4.00	N/A	N/A	NO LEAK BELOW 15
TA330-P-30	3.00-4.00	3.00	1.5 BY 4.50	N/A	N/A	NO LEAK BELOW 15
TA330-P-50	5.00-6.50	5.00	1 BY 8.00	N/A	N/A	NO LEAK BELOW 15
TA330-P-70	7.00-10.00	7.00	4.4 BY 12.00	N/A	N/A	NO LEAK BELOW 15
TA330-P-90	N/R	9.00	1 BY 12.00	N/A	N/A	NO LEAK BELOW 15
TA330-P-100	N/R	10.00	1 BY 13.00	N/A	N/A	NO LEAK BELOW 15
TA330-V-20	N/A	N/A	NO LEAK BELOW 15	2.00-3.00	2.00	3 BY 3.50
TA330-V-45	N/A	N/A	NO LEAK BELOW 15	4.50-5.50	4.50	1 BY 6.00
TA330-V-100	N/A	N/A	NO LEAK BELOW 15	10.00-11.00	9.00	1 BY 11.50

SIZE C	FSCM NO. 08992	DWG. NO. TA330	REV B
SCALE NONE	SHEET 3		

4

3

2

1

4

3

2

1

## REVISIONS

ZONE	LTR.	DESCRIPTION	DATE	APPROVED

## CRACKING VALVE PERFORMANCE

PART NUMBER	PRESSURE SIDE (FLOW OUT)			VACUUM SIDE (FLOW IN)		
	CRACKING PRESSURE RANGE (PSID)	RESEAL PRESSURE AFTER CRACK, MIN (PSID)	MINIMUM FLOW RATE (SCFM BY PSID)	CRACKING PRESSURE RANGE (PSID)	RESEAL PRESSURE AFTER CRACK, MIN (PSID)	MINIMUM FLOW RATE (SCFM BY PSID)
TA330-005C-005C	0.10 MAX	N/R	2.0 BY 0.50	0.10 MAX	N/R	1.5 BY 0.50
TA330-025C-025C	0.10-0.40	0.10	3.5 BY 1.75	0.10-0.40	0.10	3.5 BY 1.75
TA330-025C-02C	0.10-0.40	0.10	3.5 BY 1.75	0.05-0.35	0.05	3.5 BY 1.75
TA330-025C-05C	0.10-0.40	0.10	3.5 BY 1.75	0.30-0.70	0.10	4 BY 2.00
TA330-025C-20C	0.10-0.40	0.10	3.5 BY 1.75	1.75-2.25	1.00	3 BY 3.50
TA330-04C-04C	0.35-0.55	0.10	4 BY 1.75	0.35-0.55	0.10	4 BY 1.75
TA330-05C-05C	0.30-0.70	0.10	3 BY 2.00	0.30-0.70	0.10	4 BY 2.00
TA330-09C-07C	0.70-1.10	0.50	3 BY 2.00	0.50-0.90	0.30	4 BY 2.00
TA330-10C-025C	0.75-1.25	0.10	3 BY 2.00	0.10-0.40	0.10	3.5 BY 1.75
TA330-10C-10C	0.75-1.25	0.50	3 BY 2.00	0.75-1.25	0.50	4 BY 2.00
TA330-15C-05C	1.25-1.75	1.00	3 BY 3.00	0.30-0.70	0.10	4 BY 2.00
TA330-20C-20C	1.75-2.25	1.00	2 BY 3.50	1.75-2.25	1.00	3 BY 3.50
TA330-25C-25C	2.20-2.80	1.70	2 BY 4.00	2.20-2.80	1.70	2 BY 4.00
TA330-30C-30C	2.70-3.30	2.00	1.5 BY 4.50	2.70-3.30	2.00	1.5 BY 4.50
TA330-35C-35C	3.00-4.00	2.00	1.5 BY 5.00	3.00-4.00	2.00	1.5 BY 5.00
TA330-P-025C	0.10-0.40	0.05	3.5 BY 1.75	N/A	N/A	NO LEAK BELOW 15
TA330-P-03C	0.20-0.40	0.05	3 BY 1.75	N/A	N/A	NO LEAK BELOW 15
TA330-P-04C	0.30-0.50	0.05	3 BY 2.00	N/A	N/A	NO LEAK BELOW 15
TA330-P-05C	0.30-0.70	0.10	3 BY 1.50	N/A	N/A	NO LEAK BELOW 15
TA330-P-15C	1.25-1.75	1.00	3 BY 3.00	N/A	N/A	NO LEAK BELOW 15
TA330-P-25C	2.20-2.80	1.70	2 BY 4.00	N/A	N/A	NO LEAK BELOW 15
TA330-P-30C	2.70-3.30	2.00	1.5 BY 4.50	N/A	N/A	NO LEAK BELOW 15
TA330-P-35C	3.00-4.00	2.00	1.5 BY 5.00	N/A	N/A	NO LEAK BELOW 15
TA330-P-40C	3.65-4.35	3.00	1 BY 5.50	N/A	N/A	NO LEAK BELOW 15
TA330-P-50C	4.50-5.50	4.00	1 BY 6.50	N/A	N/A	NO LEAK BELOW 15
TA330-P-70C	6.50-7.50	5.00	1 BY 9.50	N/A	N/A	NO LEAK BELOW 15
TA330-P-90C	8.00-10.00	7.00	1 BY 11.50	N/A	N/A	NO LEAK BELOW 15
TA330-V-025C	N/A	N/A	NO LEAK BELOW 15	0.10-0.40	0.10	3.5 BY 1.75
TA330-V-05C	N/A	N/A	NO LEAK BELOW 15	0.30-0.70	0.10	4 BY 2.00
TA330-V-10C	N/A	N/A	NO LEAK BELOW 15	0.75-1.25	0.50	4 BY 2.00
TA330-V-15C	N/A	N/A	NO LEAK BELOW 15	1.30-1.70	1.00	3 BY 3.00

SIZE C	FSCM NO. 08992	DWG. NO. TA330	REV B
SCALE NONE	SHEET 4		

4

3

2

1