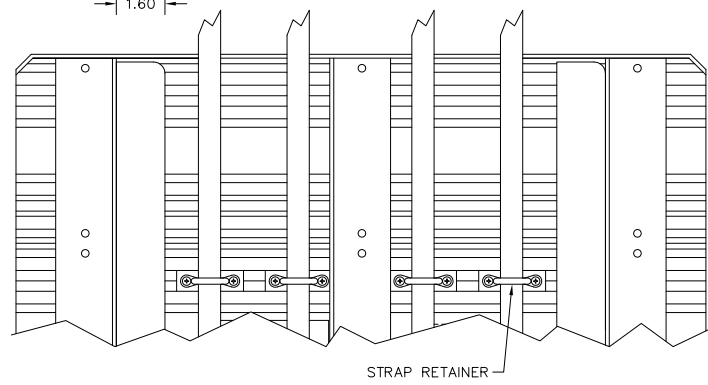
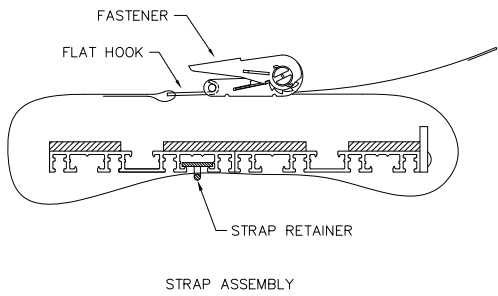
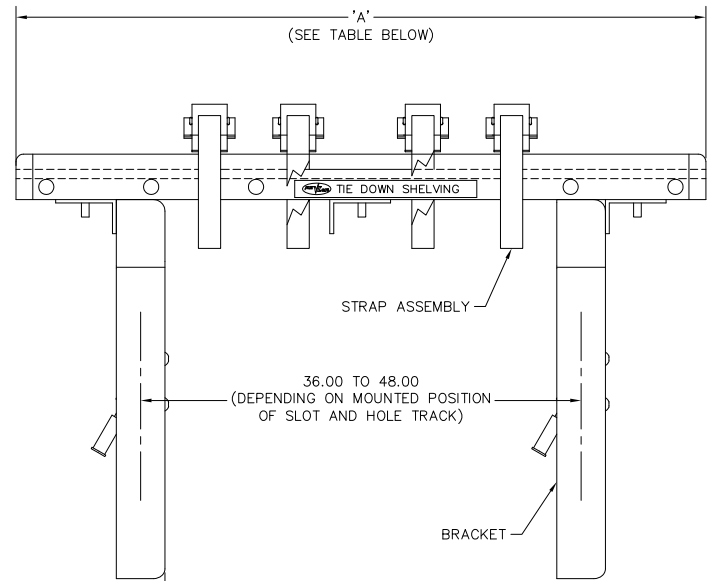
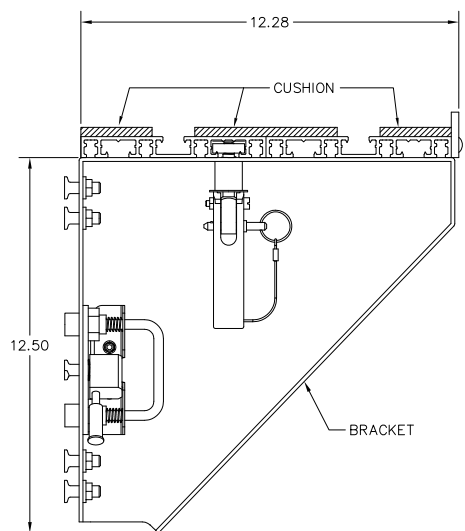


8 7 6 5 4 3 2 1

REVISIONS				
ZONE	LTR.	DESCRIPTION	DATE	APPROVED

NOTES UNLESS OTHERWISE SPECIFIED:

1. DESCRIPTION: SHELVING KIT, INTENDED FOR USE WITH ISO 7166 SLOT AND HOLE TRACK (SEE AGM DRAWING 825012, 825017 OR 825022) OR CONSULT AGM FOR CUSTOM TRACK SECTIONS. SEE TABLE BELOW FOR DESCRIPTION AND QUANTITY OF COMPONENTS SUPPLIED WITH EACH KIT.
2. MATERIALS:
  - 2.1 SHELVING PLATFORM: 6061-T6 ALUMINUM EXTRUSION IAW SAE AMS QQ-A-200/8; 6.102 +.030-.054 WIDE, (3) EACH. ALTERNATE 6005-T5 IAW ASTM B221.
  - 2.2 CUSHION: COMMERCIAL QUALITY, CLOSED CELL, POLYVINYL CHLORIDE FOAM. UNCOMPRESSED THICKNESS APPROXIMATELY 0.38 INCH. CUSHION BONDED TO SHELVING PLATFORM WITH PERMANENT ACRYLIC PRESSURE SENSITIVE ADHESIVE.
  - 2.3 BRACKET: 6061-T6 OR HIGHER TEMPER ALUMINUM ALLOY IAW ASTM B209.
  - 2.4 STRAP ASSEMBLY: SEE DRAWING CT2961. STRAP ASSEMBLY CT1109, WITH QUARTER-TURN QUICK RELEASE END FITTING FOR FASTENING INTO THE GROOVES IN TOP SURFACE OF SHELVING PLATFORM, IS ALSO AVAILABLE.
3. ASSEMBLY PROCEDURE: SEE SHEET 2 FOR DIAGRAMS.
  - 3.1 INSERT STUDS OF BRACKET INTO HOLES OF SLOT AND HOLE TRACK. SLIDE BRACKET UP OR DOWN AND THE LATCH ASSEMBLY WILL SNAP IN PLACE, HOLDING THE BRACKET AT THAT ELEVATION.
    - 3.2 PULL THE HANDLE OF THE LATCH ASSEMBLY TO ADJUST BRACKET ELEVATION.
    - 3.3 WHEN FINISHED WITH ELEVATION ADJUSTMENT, LOCK LATCH ASSEMBLY BY ROTATING HANDLE OF LATCH ASSEMBLY INTO DETENT.
  - 3.4 REPEAT STEPS 3.1 THROUGH 3.3 FOR SECOND BRACKET.
  - 3.5 WITH THE CAM ASSEMBLY IN THE UNLOCKED POSITION, PLACE SHELVING PLATFORM ON TOP OF BRACKETS WITH THE QUARTER-TURN FASTENERS LINED UP WITH GROOVE AS SHOWN.
  - 3.6 ROTATE CAM ASSEMBLY 90° TO ENGAGE QUARTER-TURN FASTENER WITH LIPS OF THE LARGE, BOTTOM GROOVE IN SHELVING PLATFORM. PUSH THE HANDLE OF CAM ASSEMBLY DOWN TO CLAMP SHELVING PLATFORM IN PLACE. INSERT LOCKING PIN INTO HOLE OF CAM ASSEMBLY.
4. UPON REQUEST, SHELVING MAY BE SUPPLIED IN LENGTHS OTHER THAN THOSE SHOWN IN TABLE BELOW.



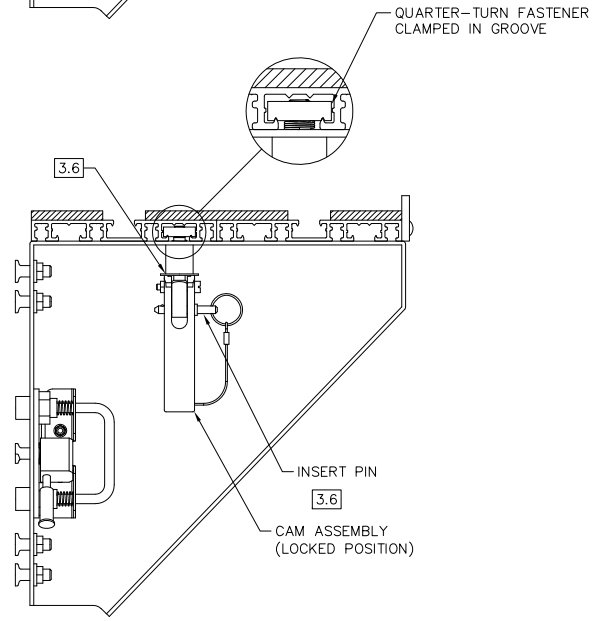
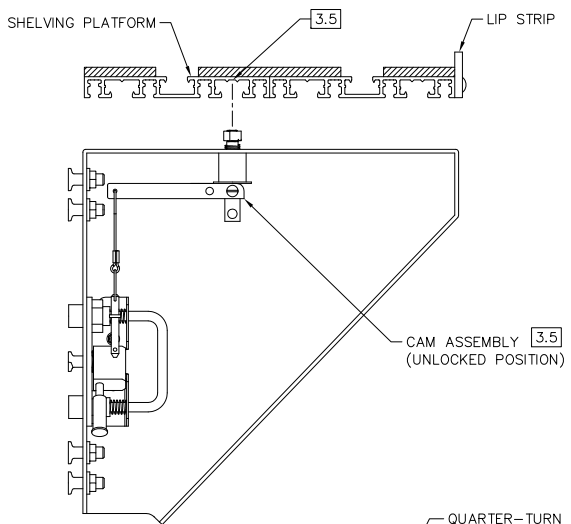
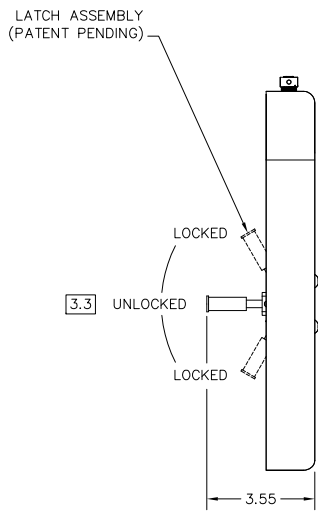
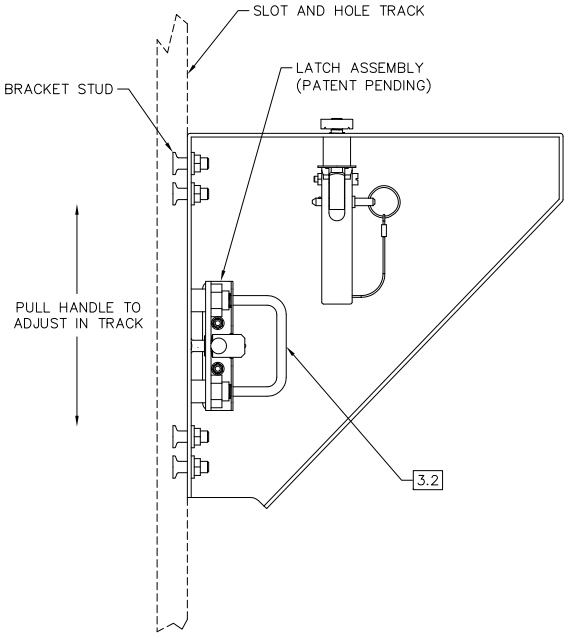
PART NO.	DIM 'A' ±.10	BRACKETS	STRAP ASSY
KT12-2400	24.00	2	2
KT12-2800	28.00	2	3
KT12-3000	30.00	2	3
KT12-3600	36.00	2	3
KT12-4200	42.00	2	4
KT12-4800	48.00	2	4
KT12-6000	60.00	2	4

INTERPRET DIMENSIONS AND TOLERANCES IAW ANSI Y14.5M-1994 UNLESS OTHERWISE SPECIFIED DIMENSIONS ARE IN INCHES DECIMALS XX ±.06 ANGLES XXX ±.030 TOLERANCES ±.5° DO NOT SCALE DRAWING		CUSTOMER: <input type="checkbox"/> MANUFACTURING: <input type="checkbox"/> APPROVED: <input type="checkbox"/> DATE: 7-12-07 DRAWN: M.ONTIVEROS	<b>OGM CONTAINER CONTROLS, INC.</b> P.O. BOX 40020 - TUCSON, ARIZONA 85717-0020 <b>12" KEVLOK QUICK-ADJUST SHELF</b>
PART DASH NO. <input type="checkbox"/> NEXT QTY. REQ'D PER ASSY. <input type="checkbox"/> FINAL <input type="checkbox"/> NEXT ASSY. <input type="checkbox"/> USED ON <input type="checkbox"/> APPLICATION <input type="checkbox"/>	SIMILAR TO <input type="checkbox"/> ADT. WT. CALC. WT. <input type="checkbox"/>	SIZE: D FSCM NO.: 08992 DWG. NO.: KT12 REV: - SCALE: <input type="checkbox"/> RELEASE DATE: <input type="checkbox"/> SHEET: 1 OF 2	FILE KT12

8 7 6 5 4 3 2 1

REVISIONS				
ZONE	LTR.	DESCRIPTION	DATE	APPROVED

D  
C  
B  
A



D  
C  
B  
A

SIZE	FSCM NO.	DWG. NO.	REV
D	08992	KT12	-
SCALE	1/1	RELEASE DATE	SHEET 2