

8 7 6 5 4 3 2 1

THIS DOCUMENT CONTAINS PROPRIETARY INFORMATION AND EXCEPT WITH WRITTEN PERMISSION BY AGM CONTAINER CONTROLS, INC. SUCH INFORMATION SHALL NOT BE PUBLISHED, DISCLOSED TO OTHERS OR USED FOR ANY PURPOSE AND THE DOCUMENT SHALL NOT BE DUPLICATED IN WHOLE OR IN PART.

REVISIONS				
ZONE	LTR.	DESCRIPTION	DATE	APPROVED

NOTES:

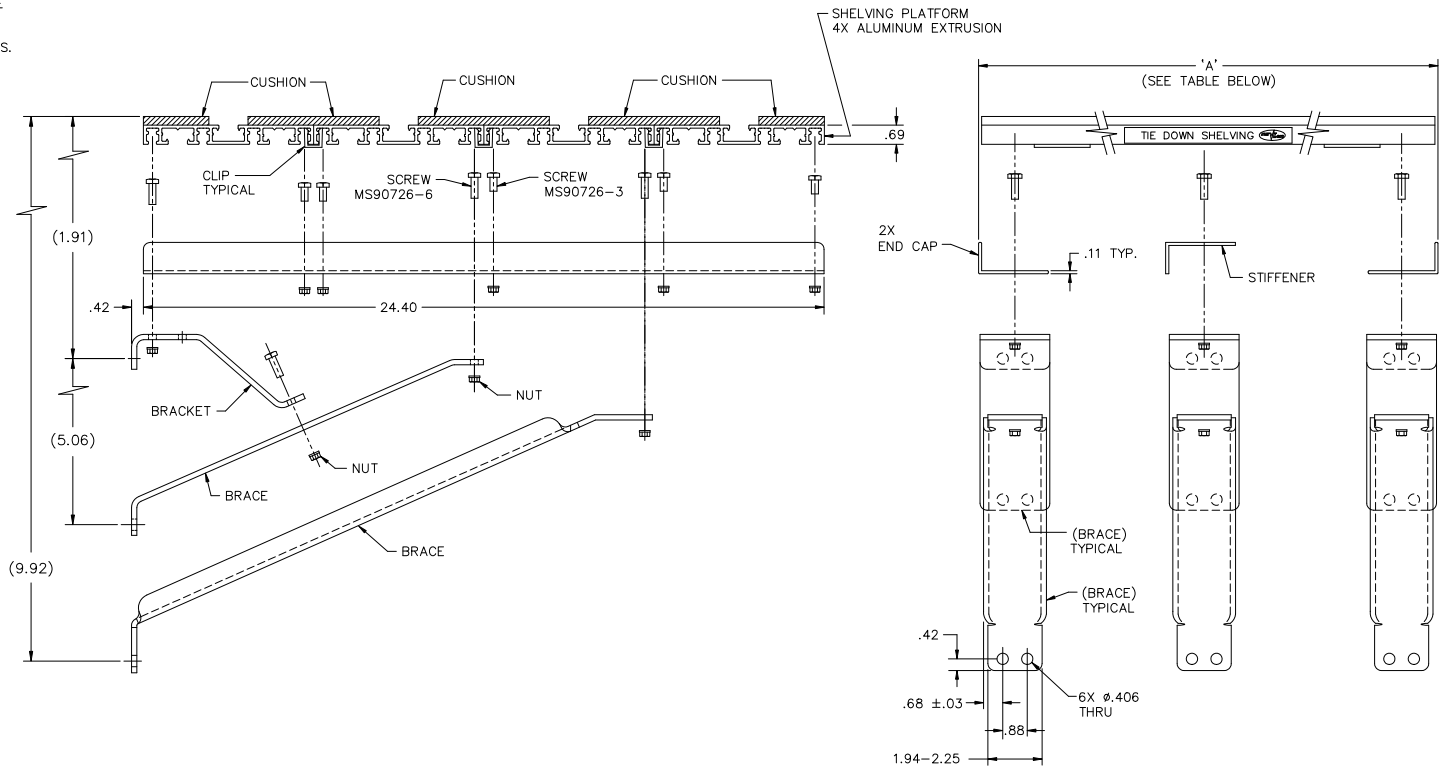
1. DESCRIPTION: SHELVING KIT, SEE PARTS LIST FOR DESCRIPTION AND QUANTITY OF COMPONENTS SUPPLIED WITH EACH KIT. SHELVING KIT IS SUPPLIED PARTIALLY ASSEMBLED AND REQUIRES SOME ASSEMBLY AT POINT OF INSTALLATION. THE LOCATION OF THE STIFFENERS (WHEN SUPPLIED) SHALL BE DETERMINED AT THE TIME OF INSTALLATION. CLIPS ARE PROVIDED FOR TEMPORARY USE DURING SHIPMENT AND ASSEMBLY. THE CLIPS MAY BE REMOVED OR RELOCATED TO FACILITATE ASSEMBLY OF STIFFENERS. END CAPS AND STIFFENERS MUST BE ATTACHED TO SHELVING PLATFORM FOR PROPER ALIGNMENT AND STRUCTURAL SUPPORT.

2. MATERIALS:

- 2.1 SHELVING PLATFORM: ALUMINUM ALLOY EXTRUSION 6.102 +.030 -.054 WIDE.
- 2.2 CUSHION: COMMERCIAL QUALITY, CLOSED CELL POLYVINYL CHLORIDE FOAM. UNCOMPRESSED THICKNESS APPROXIMATELY .38 INCH. CUSHION BONDED TO SHELVING PLATFORM WITH PERMANENT ACRYLIC PRESSURE SENSITIVE ADHESIVE.
- 2.3 BRACKET, BRACE, END CAP, STIFFENER, AND CLIP: ALUMINUM ALLOY.

3. ASSEMBLY PROCEDURE:

- 3.1 INSERT SCREW HEX HEAD INTO APPROPRIATE GROOVES IN EXTRUSIONS AS SHOWN. REMOVE OR RELOCATE CLIPS AS REQUIRED FOR INSTALLATION OF SCREWS FOR USE WITH STIFFENERS. NOTE THE VARIATION OF SCREW LENGTHS. INSERT ALL SCREWS BEFORE PROCEEDING.
 - 3.2 STIFFENER(S), WHEN PROVIDED WITH KIT, SHALL BE EQUALLY SPACED ALONG SHELVING OR IN LINE WITH NEXT ASSEMBLY SUPPORTING STRUCTURE. INSTALL BRACKET(S) AND BRACE(S) AT THE SAME TIME AS STIFFENERS.
 - 3.3 ATTACH END CAPS, BRACKETS, AND BRACES AT BOTH ENDS OF SHELVING.
 - 3.4 INSTALL MS21042-4 NUTS, ONTO SCREWS AND TIGHTEN WITH 30 TO 50 INCH POUNDS OF TORQUE.
4. SHELVING MAY BE SUPPLIED IN LENGTHS OTHER THAN THOSE SHOWN IN TABLE BELOW.



PARTS LIST - QUANTITY PER ASSEMBLY

PART NO.	DIM 'A' ±.10	PARTS LIST - QUANTITY PER ASSEMBLY					
		BRACKETS & BRACE	END CAP	STIFFENER	MS21042-4 NUT	MS90726-3 SCREW	MS90726-6 SCREW
KB24-2400	24.00	2	2	-	18	10	8
KB24-2800	28.00	2	2	-	18	10	8
KB24-3000	30.00	2	2	-	18	10	8
KB24-3500	35.00	2	2	-	18	10	8
KB24-3600	36.00	2	2	-	18	10	8
KB24-4200	42.00	3	2	1	27	15	12
KB24-4800	48.00	3	2	1	27	15	12
KB24-6000	60.00	3	2	1	27	15	12
KB24-6600	66.00	3	2	1	27	15	12
KB24-7200	72.00	3	2	1	27	15	12
KB24-8400	84.00	4	2	2	36	20	16
KB24-9600	96.00	4	2	2	36	20	16

SPECIFICATION CONTROL DRAWING

INTERPRET DIMENSIONS AND TOLERANCES IN ACCORDANCE WITH ASME Y14.5M-1982 UNLESS OTHERWISE SPECIFIED DIMENSIONS ARE IN INCHES DECIMALS .XXX ±.010 ANGLES ±.5° DO NOT SCALE DRAWING		CONTRACT DATE DRAWN L. HARTSIG 4-30-96 CHECK P. LANE 2-7-05 APPROVED P. LANE 2-7-05 MANUFACTURING CUSTOMER		GGM CONTAINER CONTROLS, INC. P.O. BOX 40020 - TUCSON, ARIZONA 85717-0020 SHELVING	
PART NO. QTY. REQD PER ASSY.	NEXT FINAL QTY. REQD PER ASSY.	NEXT ASSY. APPLICATION	USED ON	SCALE 1/2	FSCM NO. 08992 DWG. NO. KB24 REV B