

8 7 6 5 4 3 2 1

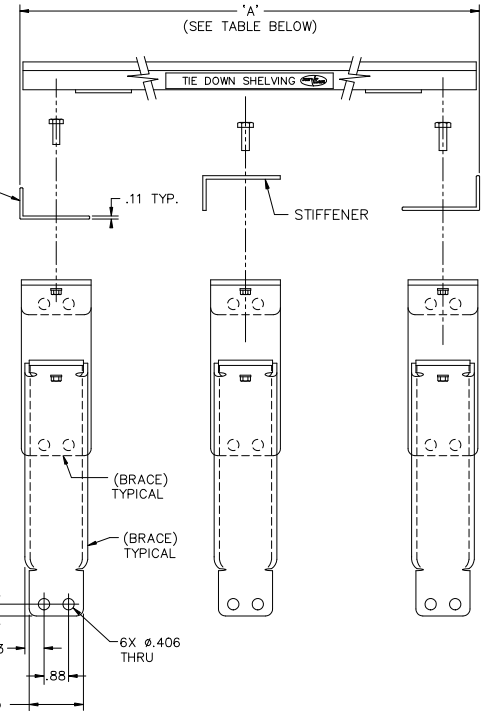
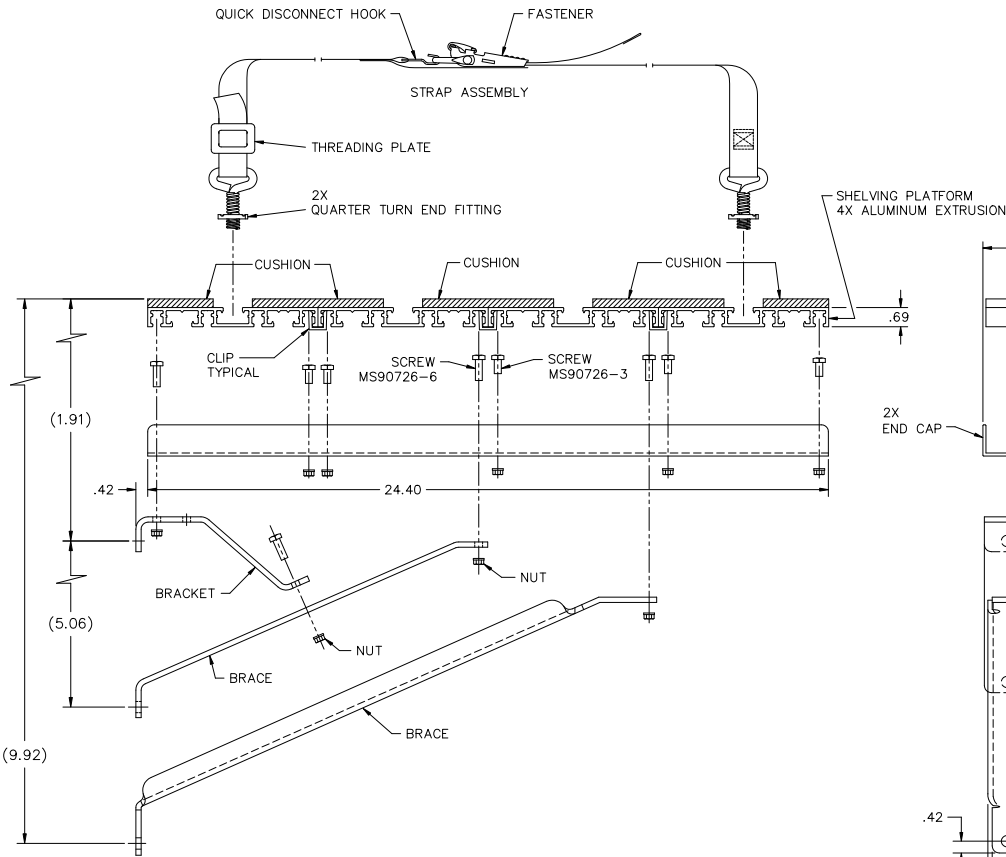
THIS DOCUMENT CONTAINS PROPRIETARY INFORMATION AND EXCEPT WITH WRITTEN PERMISSION BY GGM CONTAINER CONTROLS, INC. SUCH INFORMATION SHALL NOT BE PUBLISHED, DISCLOSED TO OTHERS OR USED FOR ANY PURPOSE AND THE DOCUMENT SHALL NOT BE DUPLICATED IN WHOLE OR IN PART.

REVISIONS			
ZONE	LTR.	DESCRIPTION	DATE

**APPROVED**  
By Eric Zuercher at 11:14 am, Apr 05, 2012

NOTES:

- DESCRIPTION: SHELVING KIT, SEE PARTS LIST FOR DESCRIPTION AND QUANTITY OF COMPONENTS SUPPLIED WITH EACH KIT. SHELVING KIT IS SUPPLIED PARTIALLY ASSEMBLED AND REQUIRES SOME ASSEMBLY AT POINT OF INSTALLATION. THE LOCATION OF THE STIFFENERS (WHEN SUPPLIED) SHALL BE DETERMINED AT THE TIME OF INSTALLATION. CLIPS ARE PROVIDED FOR TEMPORARY USE DURING SHIPMENT AND ASSEMBLY. THE CLIPS MAY BE REMOVED OR RELOCATED TO FACILITATE ASSEMBLY OF STIFFENERS. END CAPS AND STIFFENERS MUST BE ATTACHED TO SHELVING PLATFORM FOR PROPER ALIGNMENT AND STRUCTURAL SUPPORT.
- MATERIALS:
  - SHELVING PLATFORM: ALUMINUM ALLOY EXTRUSION 6.102 +.030 -.054 WIDE, (4) EACH.
  - CUSHION: COMMERCIAL QUALITY, CLOSED CELL POLYVINYL CHLORIDE FOAM. UNCOMPRESSED THICKNESS APPROXIMATELY .38 INCH. CUSHION BONDED TO SHELVING PLATFORM WITH PERMANENT ACRYLIC PRESSURE SENSITIVE ADHESIVE.
  - BRACKET, BRACE, END CAP, STIFFENER, AND CLIP: ALUMINUM ALLOY.
  - STRAP ASSEMBLY: SEE DRAWING CT1109.
- ASSEMBLY PROCEDURE:
  - INSERT SCREW HEX HEAD INTO APPROPRIATE GROOVES IN EXTRUSIONS AS SHOWN. REMOVE OR RELOCATE CLIPS AS REQUIRED FOR INSTALLATION OF SCREWS FOR USE WITH STIFFENERS. NOTE THE VARIATION OF SCREW LENGTHS. INSERT ALL SCREWS BEFORE PROCEEDING.
  - STIFFENER(S), WHEN PROVIDED WITH KIT, SHALL BE EQUALLY SPACED ALONG SHELVING OR IN LINE WITH NEXT ASSEMBLY SUPPORTING STRUCTURE. INSTALL BRACKET(S) AND BRACE(S) AT THE SAME TIME AS STIFFENERS.
  - ATTACH END CAPS, BRACKETS, AND BRACES AT BOTH ENDS OF SHELVING.
  - INSTALL MS21042-4 NUTS, ONTO SCREWS AND TIGHTEN WITH 30 TO 50 INCH POUNDS OF TORQUE.
  - ATTACH STRAP ASSEMBLY TO SHELVING BY INSERTING QUARTER TURN END FITTINGS INTO GROOVES ON PADDED SURFACE. ROTATE END FITTINGS ONE-QUARTER TURN CLOCKWISE TO LOCK IN PLACE. STRAP ASSEMBLY MAY BE SEPARATED BY REMOVING QUICK DISCONNECT HOOK FROM WIRE END OF FASTENER. DO NOT UNLACE WEBBING FROM FASTENER. FASTENER MAY BE CENTERED ALONG STRAP BY SLIDING WEBBING THROUGH THREADING PLATE.
  - SHELVING MAY BE SUPPLIED IN LENGTHS OTHER THAN THOSE SHOWN IN TABLE BELOW.



PARTS LIST - QUANTITY PER ASSEMBLY

PART NO.	DIM 'A' ±.10	BRACKETS & BRACE	END CAP	STIFFENER	STRAP ASSY	MS21042-4 NUT	MS90726-3 SCREW	MS90726-6 SCREW
KA24-2400	24.00	2	2	-	2	18	10	8
KA24-2800	28.00	2	2	-	3	18	10	8
KA24-3000	30.00	2	2	-	3	18	10	8
KA24-3500	35.00	2	2	-	3	18	10	8
KA24-3600	36.00	2	2	-	3	18	10	8
KA24-4200	42.00	3	2	1	4	27	15	12
KA24-4800	48.00	3	2	1	4	27	15	12
KA24-6000	60.00	3	2	1	5	27	15	12
KA24-6600	66.00	3	2	1	5	27	15	12
KA24-7200	72.00	3	2	1	6	27	15	12
KA24-8400	84.00	4	2	2	7	36	20	16
KA24-9600	96.00	4	2	2	8	36	20	16

SPECIFICATION CONTROL DRAWING

<p>INTERPRET DIMENSIONS AND TOLERANCES IN ACCORDANCE WITH ASME Y14.5M-1994</p> <p>UNLESS OTHERWISE SPECIFIED DIMENSIONS ARE IN INCHES</p> <p>DECIMALS .005 ±.001 FRACTIONS 1/16 ±.001</p> <p>DO NOT SCALE DRAWING</p>		<p>CONTRACT DATE</p> <p>L. HARTSIG 9-25-95</p> <p>CHECK P. LANE 2-7-05</p> <p>APPROVED P. LANE 2-7-05</p>	<p>GGM CONTAINER CONTROLS, INC.</p> <p>P.O. BOX 40020 - TUCSON, ARIZONA 85717-0020</p>
<p>PART NO. NEXT FINAL QTY. REQD PER ASSY.</p>		<p>SCALE 1/2</p>	<p>REV B</p>