

4

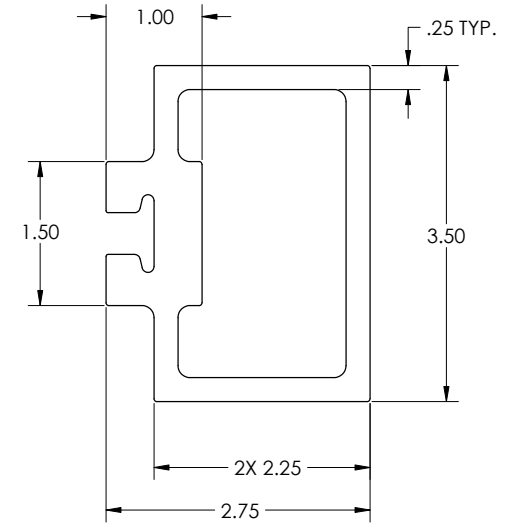
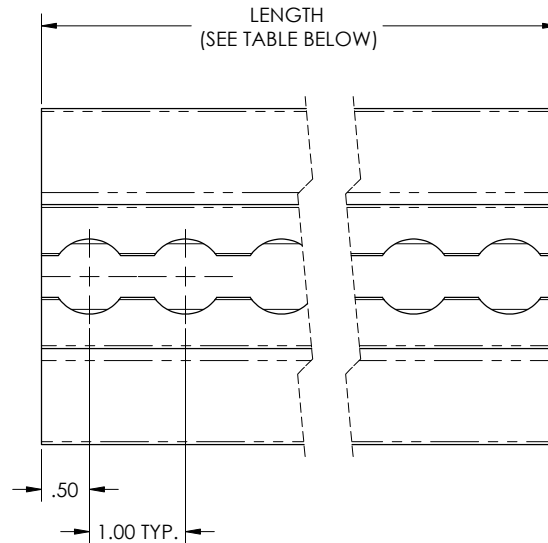
3

2

1

THIS DOCUMENT CONTAINS PROPRIETARY INFORMATION AND EXCEPT WITH WRITTEN PERMISSION BY AGM CONTAINER CONTROLS, INC. SUCH INFORMATION SHALL NOT BE PUBLISHED, DISCLOSED TO OTHERS OR USED FOR ANY PURPOSE AND THE DOCUMENT SHALL NOT BE DUPLICATED IN WHOLE OR IN PART.

REVISIONS				
ZONE	LTR.	DESCRIPTION	DATE	APPROVED
--	C	SALES DRAWING CREATED WITH REV. C. 12-13-05 EHB	12-13-05	PML



NOTES UNLESS OTHERWISE SPECIFIED:

1. MATERIAL: ALUMINUM ALLOY 5083-H111 IAW SAE AMS QQ-A-200/4 OR 5086-H111 IAW SAE AMS QQ-A-200/5. ALTERNATE SPECIFICATIONS: ASTM B221 OR ASTM B241.
2. TRACK MAY BE SUPPLIED IN ADDITIONAL LENGTHS THAN LISTED IN TABLE BELOW. CONTACT AGM CONTAINER CONTROLS, INC. ENGINEERING TO SPECIFY LENGTH.
3. TRACK MAY BE SUPPLIED WITH MOUNTING HOLES FOR BOLTING TO STEEL STRUCTURE. CONTACT AGM CONTAINER CONTROLS, INC. ENGINEERING TO SPECIFY HOLE PATTERN.

SPECIFICATION CONTROL DRAWING

PART NUMBER	LENGTH ±.06
825022-3000	30.00
825022-3600	36.00
825022-4200	42.00
825022-4800	48.00
825022-5400	54.00
825022-6000	60.00
825022-6600	66.00
825022-7200	72.00

				INTERPRET DIMENSIONS AND TOLERANCES IAW ANSI Y14.5M-1994		CONTRACT	
				UNLESS OTHERWISE SPECIFIED DIMENSIONS ARE IN INCHES		DRAWN	
				DECIMALS	ANGLES	DATE	
				.XX .015	.5°	E.BINNIE 12-13-05	
				.XXX .010		CHECK	
				DO NOT SCALE DRAWING			
				FINISH		APPROVED	
						P.LANE 12-13-05	
						MANUFACTURING	
						CUSTOMER	
PART DASH NO.	NEXT QTY. REQ'D PER ASSY.	FINAL	NEXT ASSY.	USED ON	SIMILAR TO	ACT. WT.	ISALC. WT.
APPLICATION							

AGM CONTAINER CONTROLS, INC. P.O. BOX 40020 - TUCSON ARIZONA 85717-0020			
TITLE BOX BEAM TRACK			
SIZE C	FSCM NO. 08992	DWG. NO. 825022	REV C
SCALE 1/1	RELEASE DATE	SHEET 1 OF 1	

4

3

2

1