

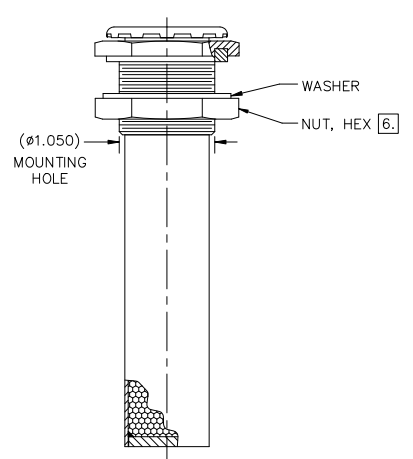
8 7 6 5 4 3 2 1

REVISIONS				
ZONE	LTR.	DESCRIPTION	DATE	APPROVED

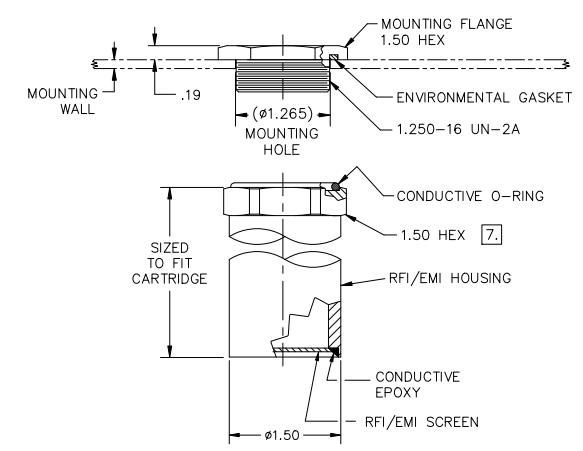
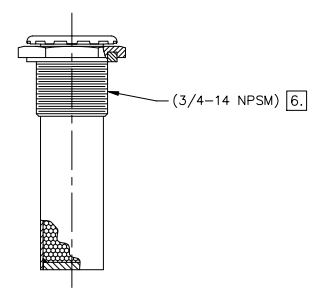
D
C
B
A

↑ (OUT OF CONTAINER)
↓ (INTO CONTAINER)

AIR FLOW "P"
AIR FLOW "V"



FITTING OPTION: -2
HEX NUT AND WASHER.
FOR VALVE AND CARTRIDGE DIMENSIONS, SEE FITTING
OPTION -0 FIGURE.



FITTING OPTION: -3
MOUNTING FLANGE AND RFI/EMI HOUSING.
FOR VALVE AND CARTRIDGE DIMENSIONS, SEE FITTING
OPTION -0 FIGURE.

SIZE	FSCM. NO.	DWG. NO.	REV
D	08992	TA330-PVDLF	-
SCALE	1	RELEASE DATE	SHEET 2

REVISIONS			
ZONE	LTR.	DESCRIPTION	DATE
			APPROVED

DASH NUMBERS FOR PRESSURE AND VACUUM SIDE MAY BE USED IN ANY COMBINATION (E.G., TA330-05-15). CONTACT AGM FOR AVAILABILITY OF SETTINGS IN ADDITION TO THOSE SHOWN BELOW.

RESEAL VALVE PERFORMANCE						
	PRESSURE SIDE (FLOW OUT)			VACUUM SIDE (FLOW IN)		
SETTING NUMBER	CRACKING PRESSURE RANGE (PSID)	RESEAL PRESSURE AFTER CRACK, MIN (PSID)	MINIMUM FLOW RATE (SCFM BY PSID)	CRACKING PRESSURE RANGE (PSID)	RESEAL PRESSURE AFTER CRACK, MIN (PSID)	MINIMUM FLOW RATE (SCFM BY PSID)
TA330-025-025-DL-F	0.25-0.75	0.25	0.7 BY 1.75	0.25-0.75	0.25	1.0 BY 1.75
TA330-05-05-DL-F	0.50-1.00	0.50	0.7 BY 2.00	0.50-1.00	0.50	1.0 BY 2.00
TA330-10-10-DL-F	1.00-1.50	1.00	0.6 BY 2.50	1.00-1.50	1.00	0.8 BY 2.50
TA330-15-15-DL-F	1.50-2.25	1.50	0.5 BY 3.00	1.50-2.25	1.50	0.7 BY 3.00
TA330-20-20-DL-F	2.00-3.00	2.00	0.5 BY 3.50	2.00-3.00	2.00	0.7 BY 3.50
TA330-25-25-DL-F	2.50-3.50	2.50	0.3 BY 4.00	2.50-3.50	2.50	0.6 BY 4.00
TA330-30-30-DL-F	3.00-4.00	3.00	0.3 BY 4.50	3.00-4.00	3.00	0.6 BY 4.50
TA330-40-40-DL-F	4.00-5.50	4.00	0.2 BY 5.50	4.00-5.50	4.00	0.2 BY 5.50
TA330-50-50-DL-F	5.00-6.50	5.00	0.2 BY 8.00	5.00-6.50	5.00	0.2 BY 8.00

CRACKING VALVE PERFORMANCE						
	PRESSURE SIDE (FLOW OUT)			VACUUM SIDE (FLOW IN)		
SETTING NUMBER	CRACKING PRESSURE RANGE (PSID)	RESEAL PRESSURE AFTER CRACK, MIN (PSID)	MINIMUM FLOW RATE (SCFM BY PSID)	CRACKING PRESSURE RANGE (PSID)	RESEAL PRESSURE AFTER CRACK, MIN (PSID)	MINIMUM FLOW RATE (SCFM BY PSID)
TA330-025C-025C-DL-F	0.10-0.40	0.10	0.9 BY 1.75	0.10-0.40	0.10	0.9 BY 1.75
TA330-05C-05C-DL-F	0.30-0.70	0.10	0.7 BY 2.00	0.30-0.70	0.10	1.0 BY 2.00
TA330-10C-10C-DL-F	0.75-1.25	0.50	0.7 BY 2.00	0.75-1.25	0.50	1.0 BY 2.00
TA330-15C-15C-DL-F	1.25-1.75	1.00	0.7 BY 3.00	1.25-1.75	1.00	0.7 BY 3.00
TA330-20C-20C-DL-F	1.75-2.25	1.00	0.5 BY 3.50	1.75-2.25	1.00	0.7 BY 3.50