

4

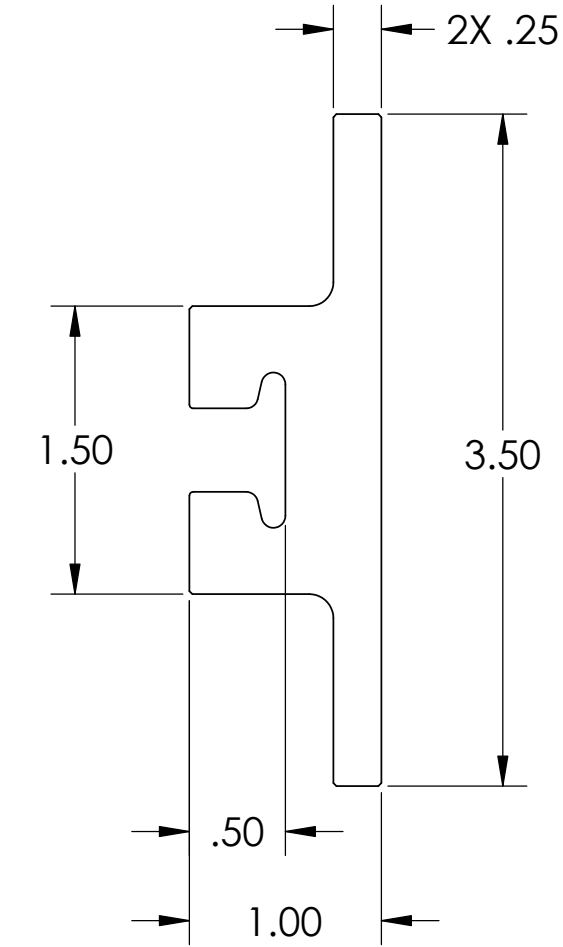
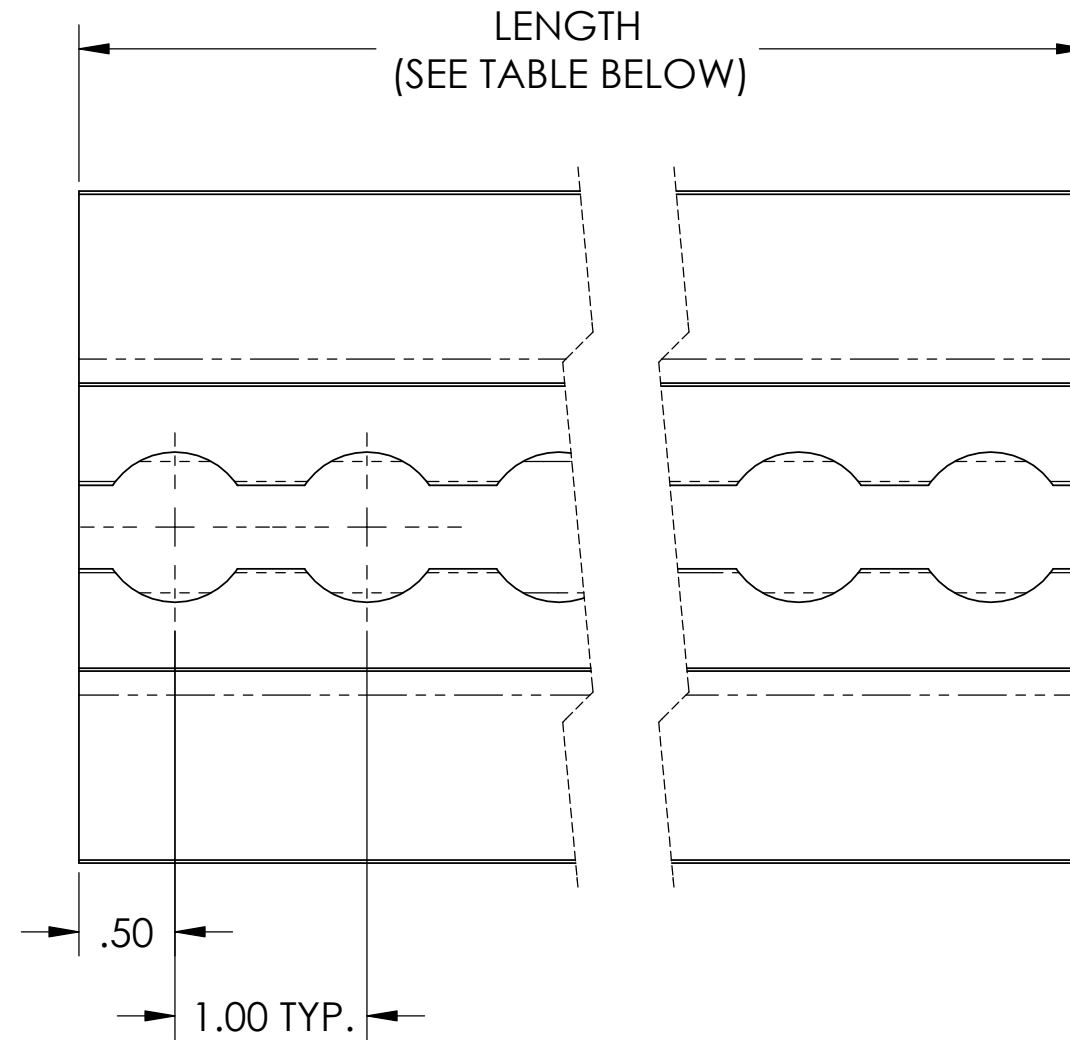
3

2

1

THIS DOCUMENT CONTAINS PROPRIETARY INFORMATION AND EXCEPT WITH WRITTEN PERMISSION BY AGM CONTAINER CONTROLS, INC. SUCH INFORMATION SHALL NOT BE PUBLISHED, DISCLOSED TO OTHERS OR USED FOR ANY PURPOSE AND THE DOCUMENT SHALL NOT BE DUPLICATED IN WHOLE OR IN PART.

| REVISIONS |      |  |          |          |
|-----------|------|--|----------|----------|
| ZONE      | LTR. | DESCRIPTION                                    | DATE     | APPROVED |
| --        | A    | SALES DRAWING CREATED WITH REV A. 12-13-05 EHB | 12-13-05 | PML      |
| --        | B    | UPDATED IAW DCN#06-011. 2-24-06 EHB            | 3-21-06  | PML      |



NOTES UNLESS OTHERWISE SPECIFIED:

- MATERIAL: ALUMINUM ALLOY 5083-H111 IAW SAE AMS QQ-A-200/4 OR 5086-H111 IAW SAE AMS QQ-A-200/5. ALTERNATE SPECIFICATIONS: ASTM B221 OR ASTM B241.
- TRACK MAY BE SUPPLIED IN ADDITIONAL LENGTHS THAN LISTED IN TABLE BELOW. CONTACT AGM CONTAINER CONTROLS, INC. ENGINEERING TO SPECIFY LENGTH.
- TRACK MAY BE SUPPLIED WITH MOUNTING HOLES FOR BOLTING TO STEEL STRUCTURE. CONTACT AGM CONTAINER CONTROLS, INC. ENGINEERING TO SPECIFY HOLE PATTERN.

SPECIFICATION CONTROL DRAWING

| PART NUMBER | LENGTH ±.06 |
|-------------|-------------|
| 825017-3000 | 30.00       |
| 825017-3600 | 36.00       |
| 825017-4200 | 42.00       |
| 825017-4800 | 48.00       |
| 825017-5400 | 54.00       |
| 825017-6000 | 60.00       |
| 825017-6600 | 66.00       |
| 825017-7200 | 72.00       |

| PART DASH NO. | NEXT | FINAL | NEXT ASSY. | USED ON | APPLICATION |
|---------------|------|-------|------------|---------|-------------|
|               |      |       |            |         |             |
|               |      |       |            |         |             |
|               |      |       |            |         |             |
|               |      |       |            |         |             |
|               |      |       |            |         |             |
|               |      |       |            |         |             |
|               |      |       |            |         |             |
|               |      |       |            |         |             |
|               |      |       |            |         |             |
|               |      |       |            |         |             |

INTERPRET DIMENSIONS AND TOLERANCES IAW ANSI Y14.5M-1994  
 UNLESS OTHERWISE SPECIFIED DIMENSIONS ARE IN INCHES  
 TOLERANCES:  
 DECIMALS .XX ± .015 ANGLES ± .5°  
 .XXX ± .010  
 DO NOT SCALE DRAWING

|               |          |
|---------------|----------|
| CONTRACT      |          |
| DRAWN         | DATE     |
| E.BINNIE      | 12-13-05 |
| CHECK         |          |
| P.LANE        | 12-13-05 |
| APPROVED      |          |
| P.LANE        | 12-13-05 |
| MANUFACTURING |          |
| CUSTOMER      |          |

|   |                          |                           |                 |
|---|--------------------------|---------------------------|-----------------|
| AGM CONTAINER CONTROLS, INC.<br>P.O. BOX 40020 - TUCSON, ARIZONA 85717-0020 |                          |                           |                 |
| TITLE<br><b>WINGED TRACK</b>  |                          |                           |                 |
| SIZE<br><b>C</b>  | FSCM NO.<br><b>08992</b> | DWG. NO.<br><b>825017</b> | REV<br><b>B</b> |
| SCALE<br>1/1  | RELEASE DATE             | SHEET<br>1 OF 1           |                 |

4

3

2

1