

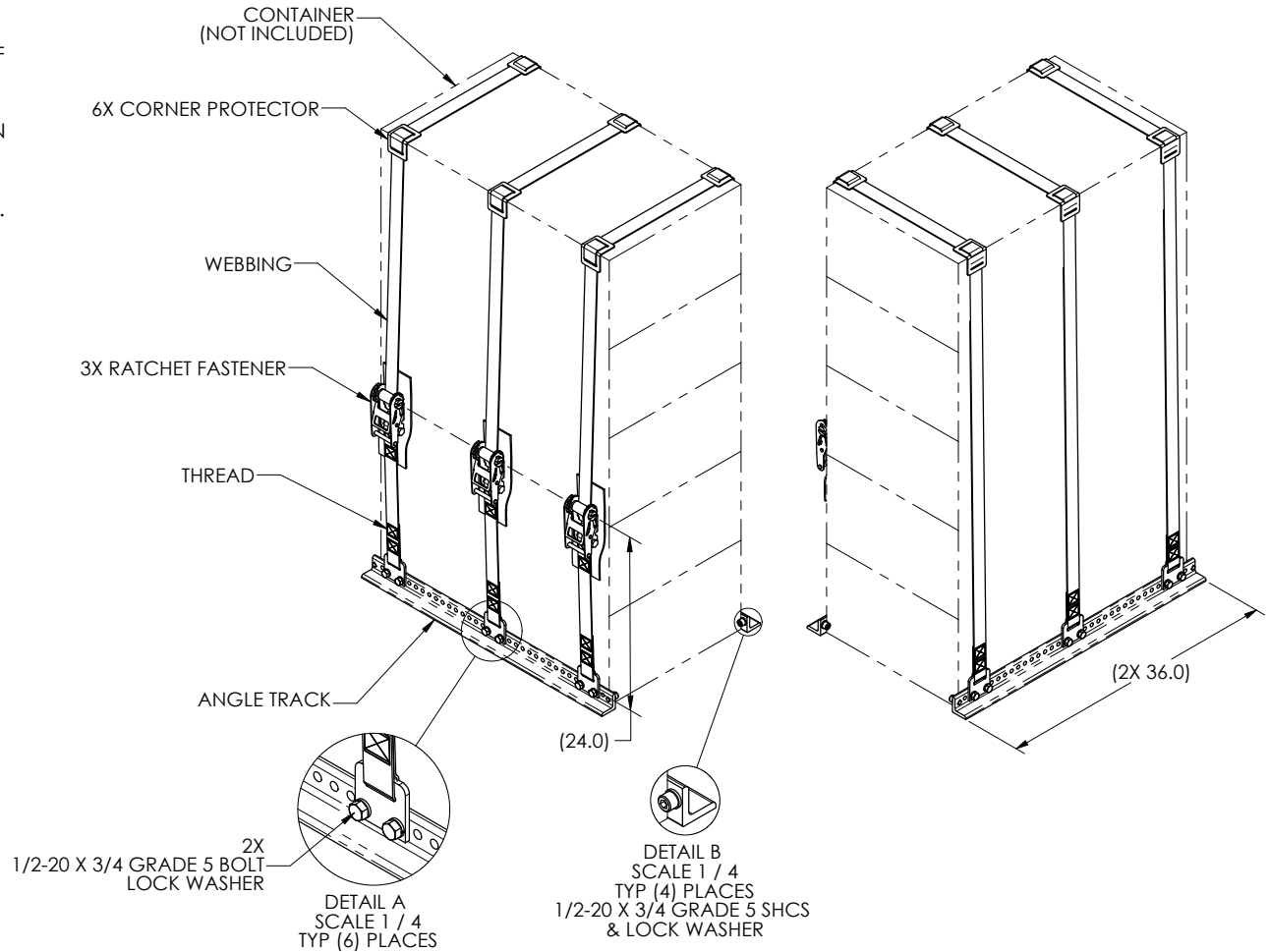
REVISIONS				
ZONE	LTR.	DESCRIPTION	DATE	APPROVED
B2	B	UPDATED DETAIL B WITH SHCS GRAPHICS. ADDED SHCS	1-26-09	PML
A4		TO NOTE 1.1 & 4 REPLACEMENT PARTS. 1-13-09 JTC		

THIS DOCUMENT CONTAINS PROPRIETARY INFORMATION AND EXCEPT WITH WRITTEN PERMISSION BY AGM CONTAINER CONTROLS, INC. SUCH INFORMATION SHALL NOT BE PUBLISHED, DISCLOSED TO OTHERS OR USED FOR ANY PURPOSE AND THE DOCUMENT SHALL NOT BE DUPLICATED IN WHOLE OR IN PART.

NOTES UNLESS OTHERWISE SPECIFIED:

1. DESCRIPTION: THIS PART NUMBER CONTAINS A QUANTITY OF THREE EACH STRAP ASSEMBLIES WITH MOUNTING HARDWARE, TWO ANGLE TRACKS AND THE FOLLOWING ITEMS WHICH ARE INCLUDED WITH THIS P/N BUT NOT SHOWN ON THIS DRAWING: SIX EACH 2" X 2" X 1/4" BACKING PLATES, SIX EACH 1/2"-13 X 2" GRADE 5 BOLTS, SIX EACH 1/2" FLAT WASHERS AND SIX EACH 1/2" NYLON INSERT NUTS.
  - 1.1 EACH STRAP ASSEMBLY INCLUDES WEBBING TO SPAN 132 INCHES FROM ANCHOR PLATE TO ANCHOR PLATE, ONE RATCHET FASTENER, TWO CORNER PROTECTORS, FOUR EACH 1/2"-20 X 3/4" GRADE 5 BOLTS, TWO EACH 1/2"-20 X 3/4" GRADE 5 SHCS, AND SIX EACH 1/2" LOCK WASHERS.
2. MATERIALS:
  - 2.1 WEBBING: WOVEN POLYESTER TYPE V, A-A-55242, CLASS 2, COLOR OLIVE DRAB NUMBER 7.
  - 2.2 THREAD: NYLON IAW V-T-295, TYPE II, CLASS A, SIZE 3 CORD, COLOR BLACK.
  - 2.3 ANGLE TRACKS (RAILS): CARBON STEEL.
  - 2.4 STRAP END PLATE, BACKING PLATE, RATCHET FASTENER, LOCK WASHER, FLAT WASHER AND BOLTS: CARBON STEEL.
  - 2.5 CORNER PROTECTOR: RUBBER.
3. FINISH:
  - 3.1 RATCHET FASTENER: ZINC PLATE BRONZE CHROMATE.
  - 3.2 STRAP END PLATE AND BACKING PLATE: ZINC PLATE CLEAR CHROMATE.
  - 3.3 BOLTS: ZINC, CAD OR BLACK OXIDE PLATED.
  - 3.4 LOCK WASHER AND FLAT WASHER: ZINC PLATE.
  - 3.5 ANGLE TRACK: COMMERCIAL PRIMER, COLOR GRAY, SIMILAR TO 36270 OF FED-STD-595.
4. REPLACEMENT PARTS (P/N'S SHOWN ARE 1 EACH):

- STRAP ASSEMBLY, CT3351
- CORNER PROTECTOR, 875743
- 1/2-20 X 3/4 GRADE 5 BOLT, 970808
- 1/2 LOCK WASHER, 970784
- 1/2-13 X 2 GRADE 5 BOLT, 970809
- 1/2 FLAT WASHER, MS15795-855
- 1/2-20 NYLON INSERT NUT, 970746
- ANGLE TRACK, 875745-146
- 1/2-20 X 3/4 GRADE 5 SHCS, 970830



SPECIFICATION CONTROL DRAWING

INTERPRET DIMENSIONS AND TOLERANCES IAW ANSI Y14.5M-1994				CONTRACT	
UNLESS OTHERWISE SPECIFIED DIMENSIONS ARE IN INCHES				DRAWN	DATE
DECIMALS	.XX	.12	ANGLES	.5°	
	.XXX	.010			
DO NOT SCALE DRAWING				CHECK	
FINISH				APPROVED	
3.				E.ZUERCHER	7-17-08
PART DASH NO.				MANUFACTURING	
NEXT	FINAL	NEXT ASSY.	USED ON	E.ZUERCHER	7-17-08
QTY. REQ'D PER ASSY.				CUSTOMER	
SIMILAR TO		ACT. WT.	ISALC. WT.		

AGM CONTAINER CONTROLS, INC. P.O. BOX 40020 - TUCSON ARIZONA 85717-0020			
TITLE <b>ANGLE TRACK TIE DOWN</b>			
SIZE <b>C</b>	FSCM NO. <b>08992</b>	DWG. NO. <b>KX1125</b>	REV <b>B</b>
SCALE 1/10	RELEASE DATE	SHEET 1 OF 1	

4

3

2

1

4

3

2

1